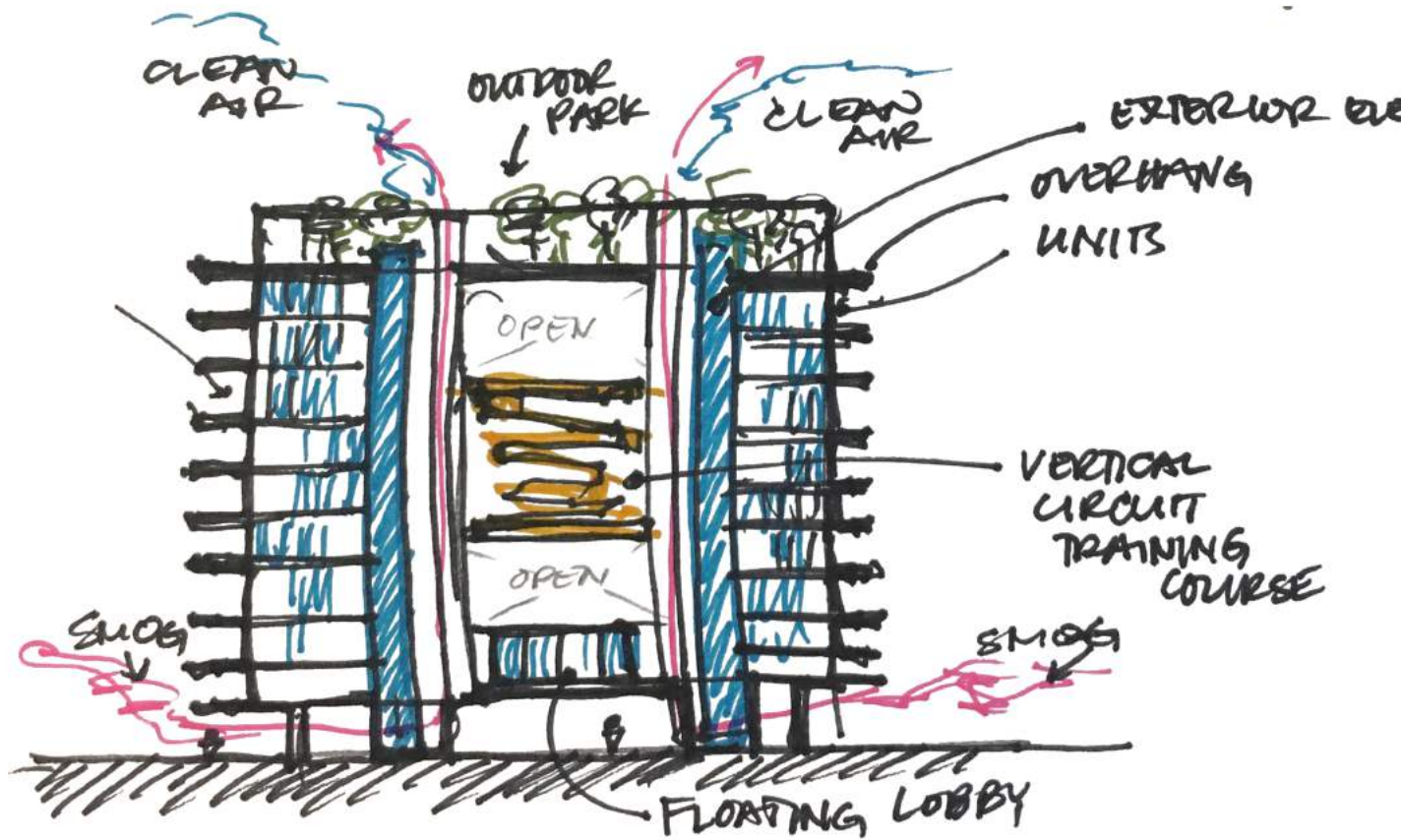


# AIR PURIFIER

## DESIGN PROGRESS + DRAWINGS

STEPHANIE CORTES | CARMELLE LUMINARIAS

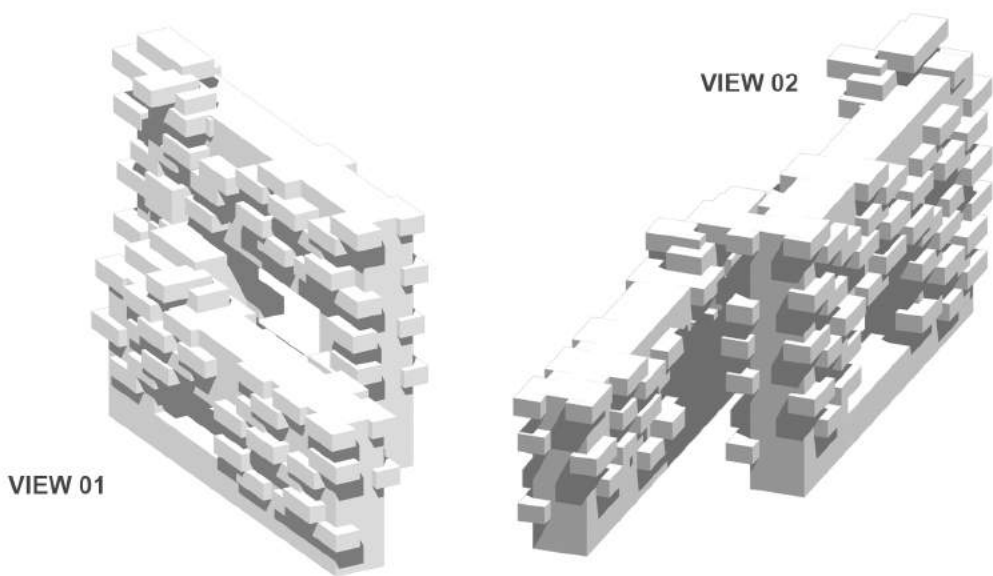
### CONCEPT



## DESIGN ELEMENTS

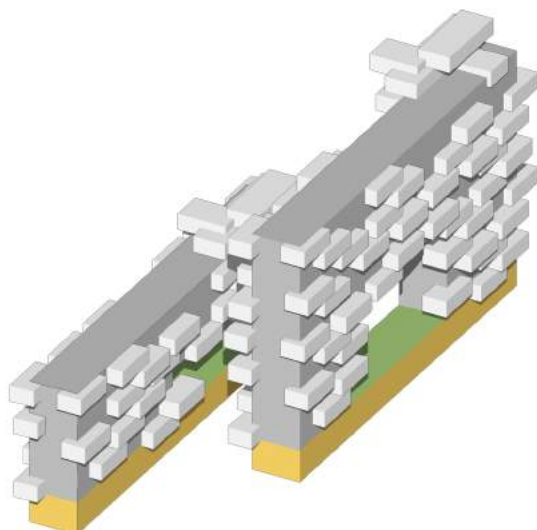
- FLOATING PLANES
- MODULAR
- OFFSETTING PLANES
- PERFORATIONS
- TRANSPARENCY
- CANOPIES

## MASSING



## PROGRAM DIAGRAM

- PUBLIC
- GREEN SPACE
- COMMUNAL
- PRIVATE



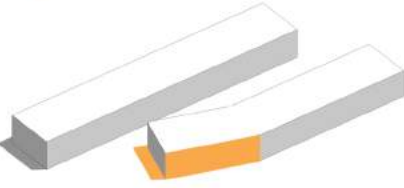
# DESIGN PROCESS



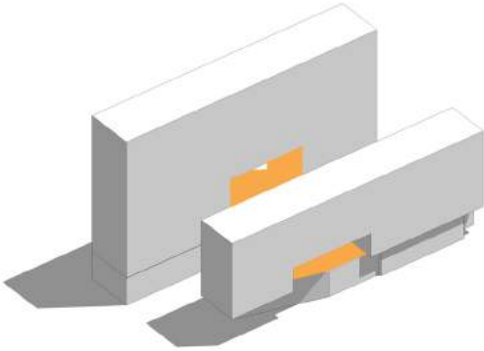
● HORIZONTAL ELONGATION



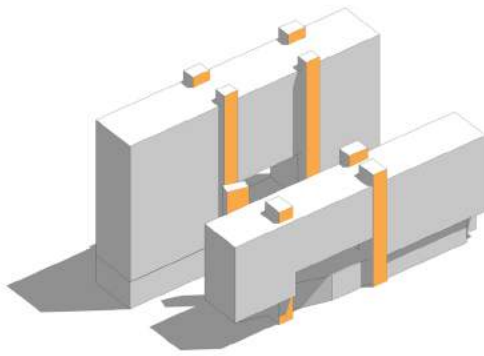
● COMMUNITY INTEGRATION  
\*PASEO



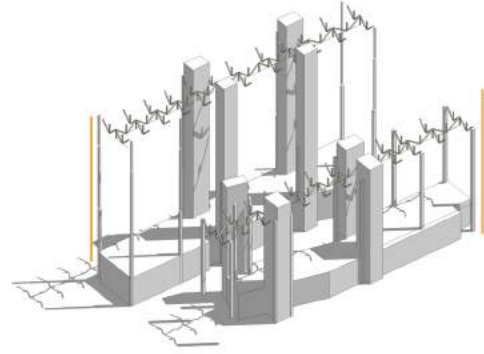
● ENTRY WAY DISTINCTION



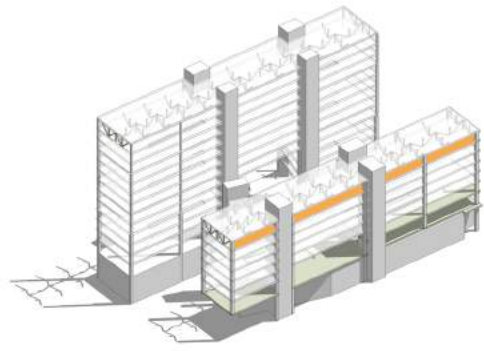
● CREATION OF VOIDS IN  
VERTICAL PLANE



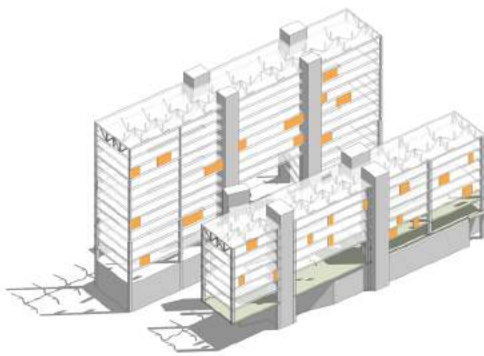
● PLACEMENT OF VERTICAL  
CIRCULATION



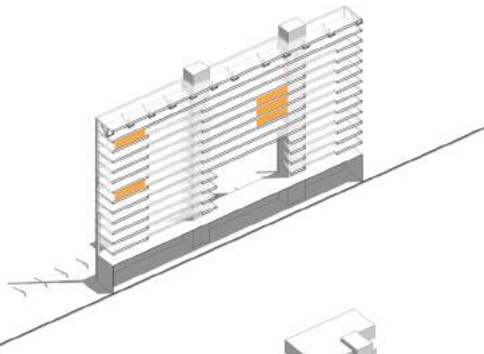
● STRUCTURE ANALYSES  
+ DESIGN



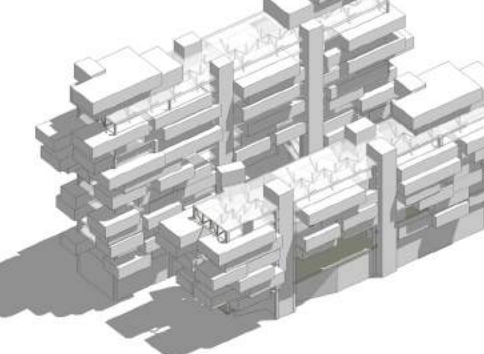
● PLACEMENT OF SLABS



● PLACEMENT OF BRISE  
SOLEIL



● PLACEMENT OF GREEN  
WALLS + PERFORATIONS  
IN HORIZONTAL PLANES



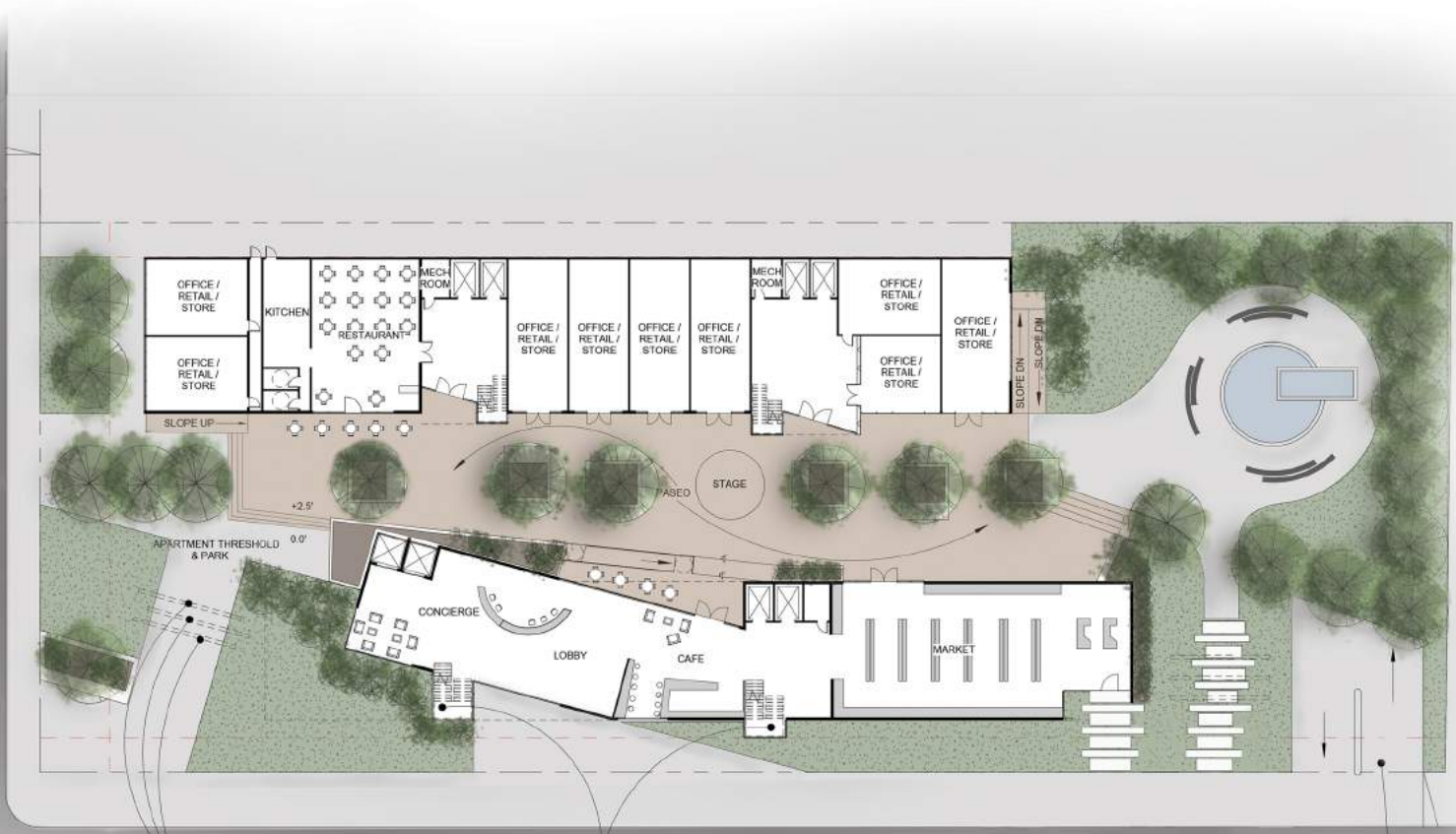
● CULMINATION OF ALL  
ELEMENTS

SITE PLAN 



# GROUND PLAN

W. 12TH ST.



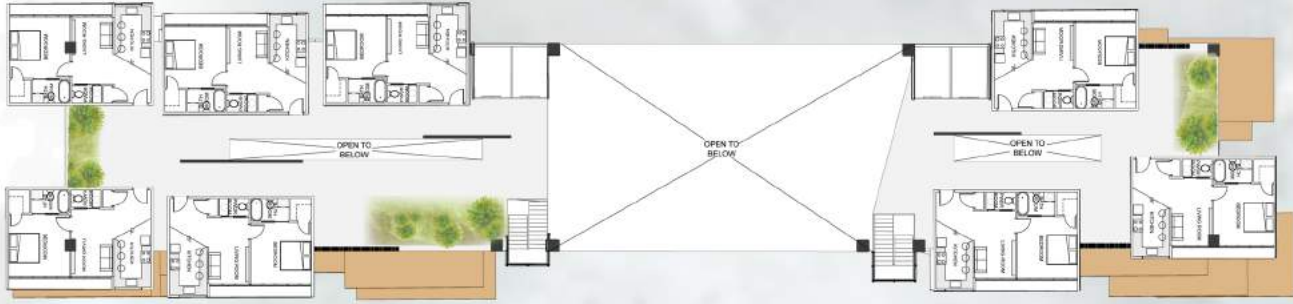
PASEO TRELLIS THRESHOLD

"ATTRACTIVE STAIRS"

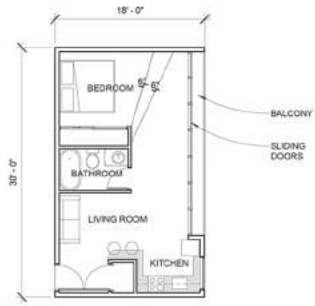
S. GRAND VE.

PARKING GARAGE ENTRY

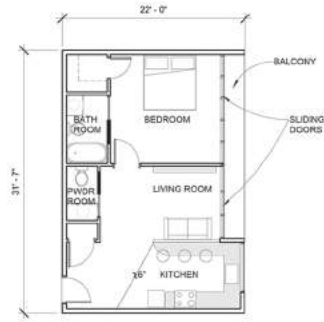
# TYPICAL FLOOR PLANS



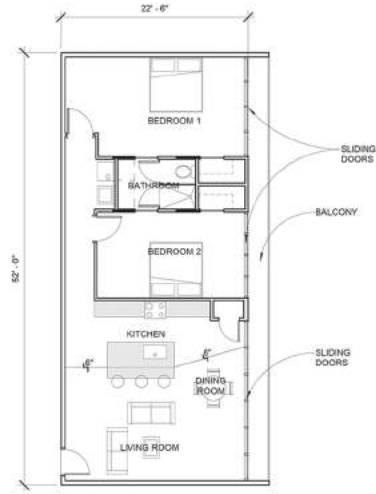
# UNIT PLANS



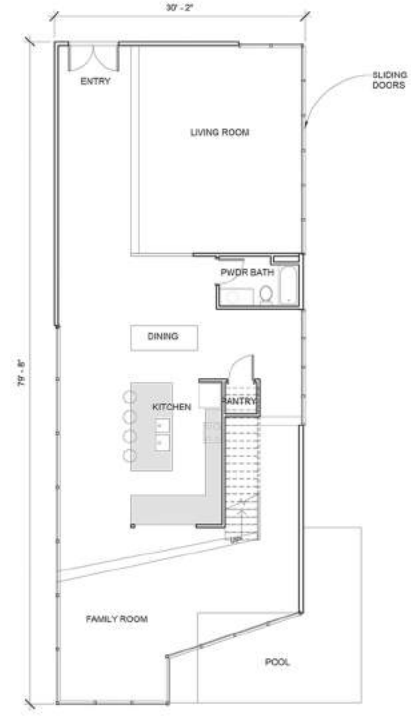
STUDIO FLOOR PLAN, TYP.  
540 SF



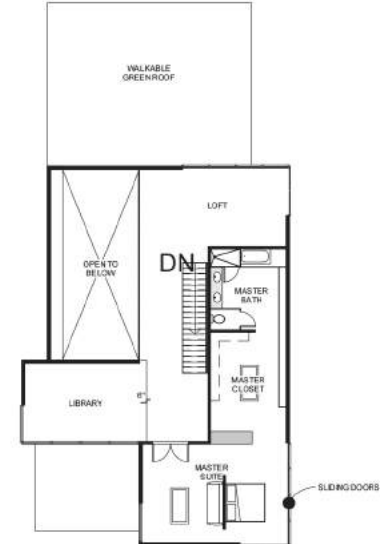
1 BR FLOOR PLAN, TYP.  
695 SF



2 BR FLOOR PLAN, TYP.  
1300 SF



PENTHOUSE FLOOR PLAN  
3000~4000 SF



PENTHOUSE FLOOR PLAN  
LEVEL II

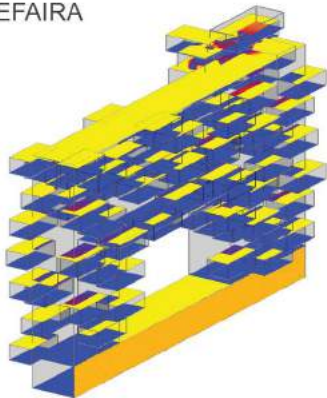
ELEVATION



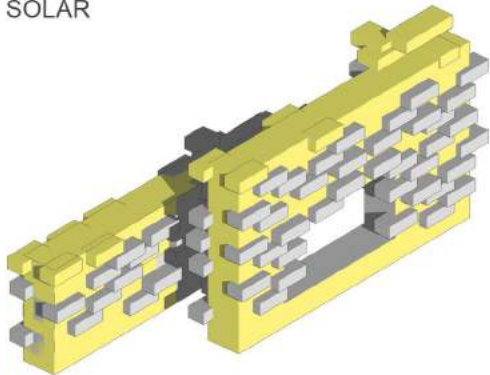


# SOLAR ANALYSIS

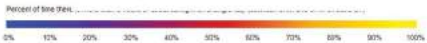
SEFAIRA



SOLAR

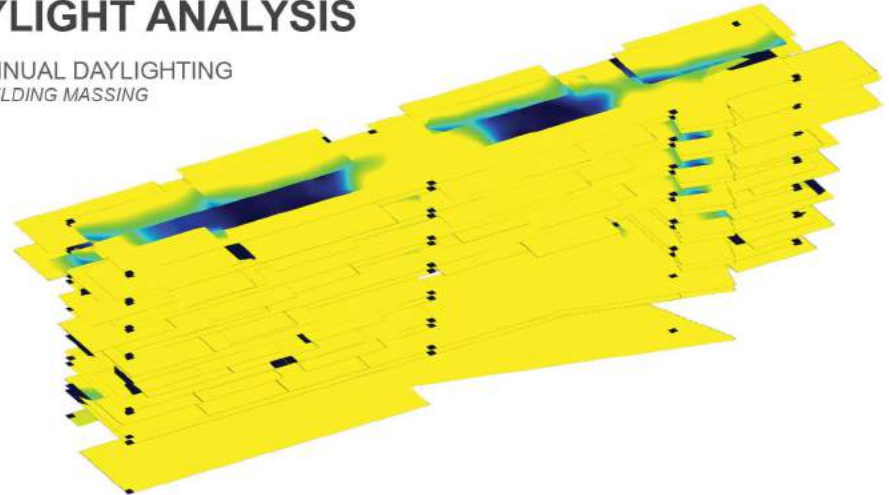


PV PANELS ON ROOF +  
PV WALL CLADDING ON  
SW FACADES



# DAYLIGHT ANALYSIS

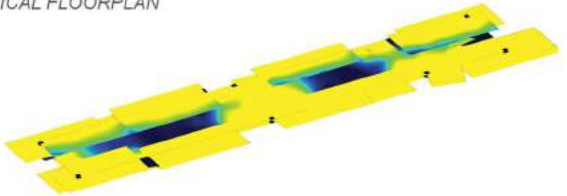
ANNUAL DAYLIGHTING  
BUILDING MASSING



Percentage of occupied hours where illuminance is at least **28 footcandles**, measured at 2.79 feet above the floor plate.

0% 25% 50% 75% 100%

SPRING EQUINOX  
TYPICAL FLOORPLAN

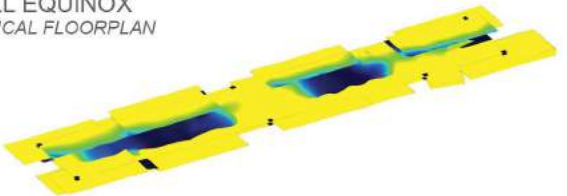


MAR 21  
12:00 PM

Footcandle levels on March 21 at 12PM measured at 2.79 feet above the floor plate. Time does not take into account daylight savings time.

0 5 10 15 14+

FALL EQUINOX  
TYPICAL FLOORPLAN

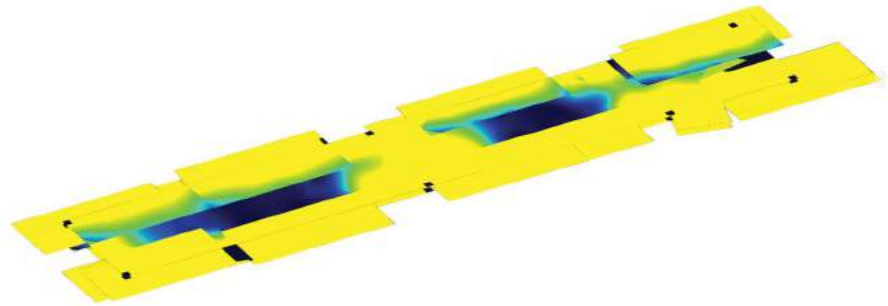


SEP 21  
12:00 PM

Footcandle levels on September 21 at 12PM measured at 2.79 feet above the floor plate. Time does not take into account daylight savings time.

0 5 10 15 14+

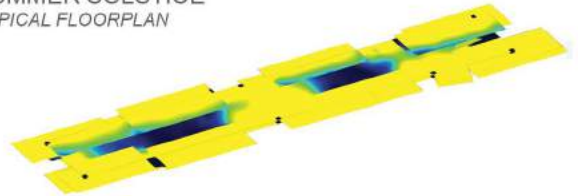
ANNUAL DAYLIGHTING  
TYPICAL FLOORPLAN



Percentage of occupied hours where illuminance is at least **28 footcandles**, measured at 2.79 feet above the floor plate.

0% 25% 50% 75% 100%

SUMMER SOLSTICE  
TYPICAL FLOORPLAN

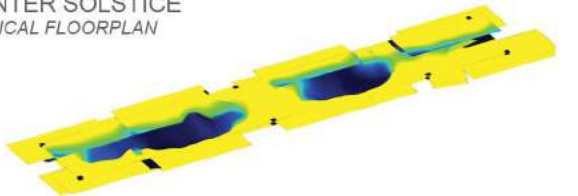


JUN 21  
12:00 PM

Footcandle levels on June 21 at 12PM measured at 2.79 feet above the floor plate. Time does not take into account daylight savings time.

1 5 10 15 14+ 7+

WINTER SOLSTICE  
TYPICAL FLOORPLAN



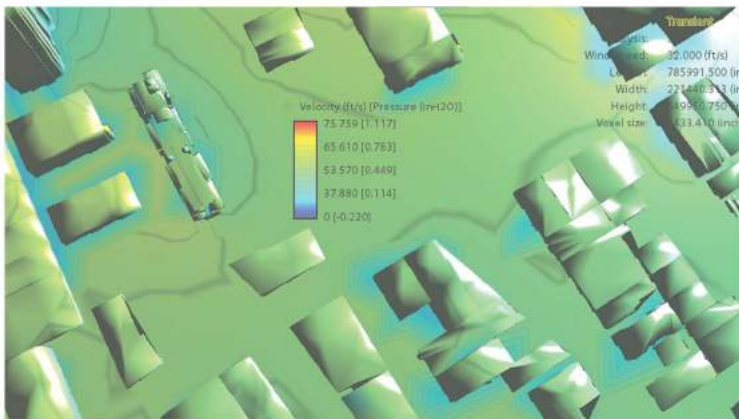
DEC 21  
12:00 PM

Footcandle levels on December 21 at 12PM measured at 2.79 feet above the floor plate. Time does not take into account daylight savings time.

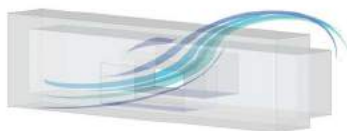
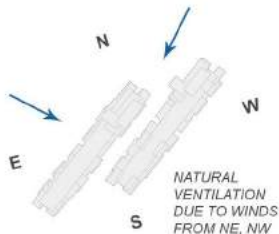
0 5 10 15 14+

# WIND ANALYSIS

AUTODESK | FLOW DESIGN



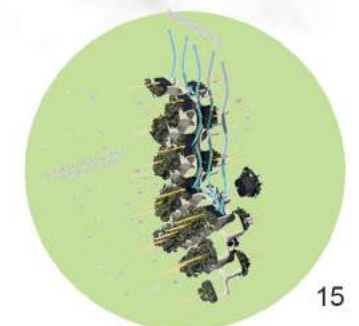
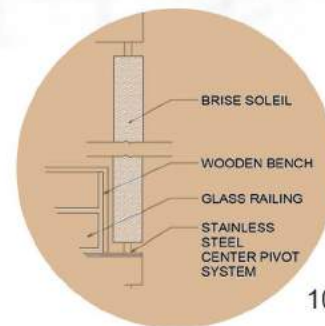
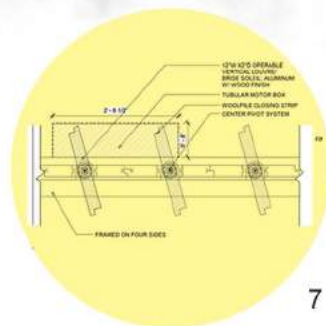
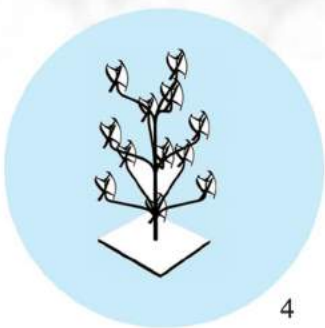
AVERAGE  
VELOCITY



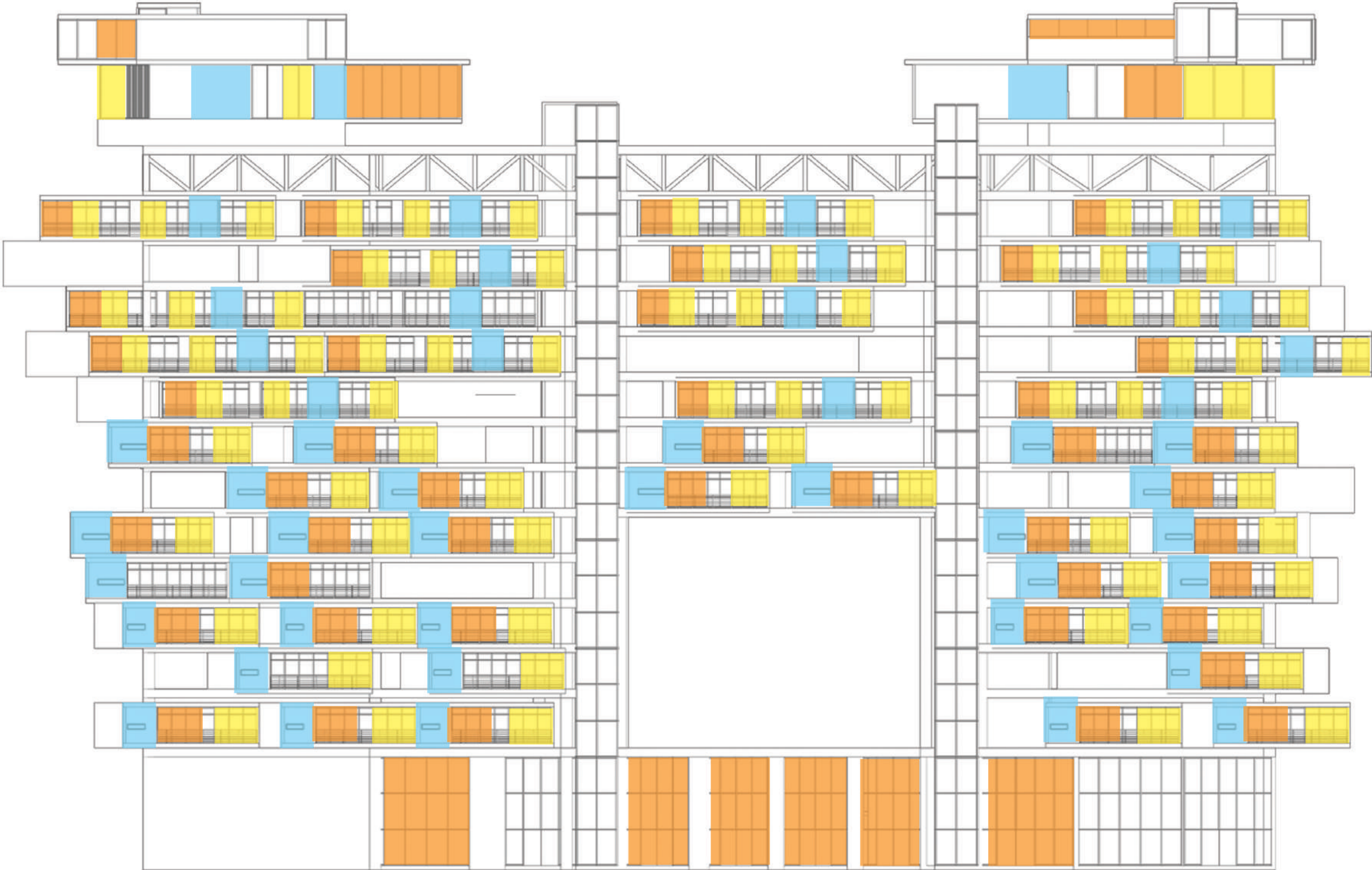
# SECTION

## ● SUSTAINABLE SYSTEMS

- 1. PASSIVE VENTILATION
- 2. BUILDING AIR FILTRATION
- 3. MODULAR UNIT FILTRATION PANEL
- 4. WIND TREE/ TURBINES
- 5. PV WALL CLADDING
- 6. PV PANELS/ TRANSPARENT PANELS
- 7. OPERABLE SUN SHADING
- 8. REUSABLE WATER
- 8. MODULAR WOOD UNITS
- 9. CARBON ABSORPTION WOOD/ BRISE SOLEIL
- 10. TITANIUM DIOXIDE COATING
- 12. INTENSIVE GARDEN/ GREENSPACE
- 13. EXTENSIVE GARDEN/ GREENSPACE
- 14. LIVING/ ACTIVE GREEN WALL
- 15. GREEN WALL/ HANGING GARDEN



SUSTAINABLE SYSTEMS | ENERGY



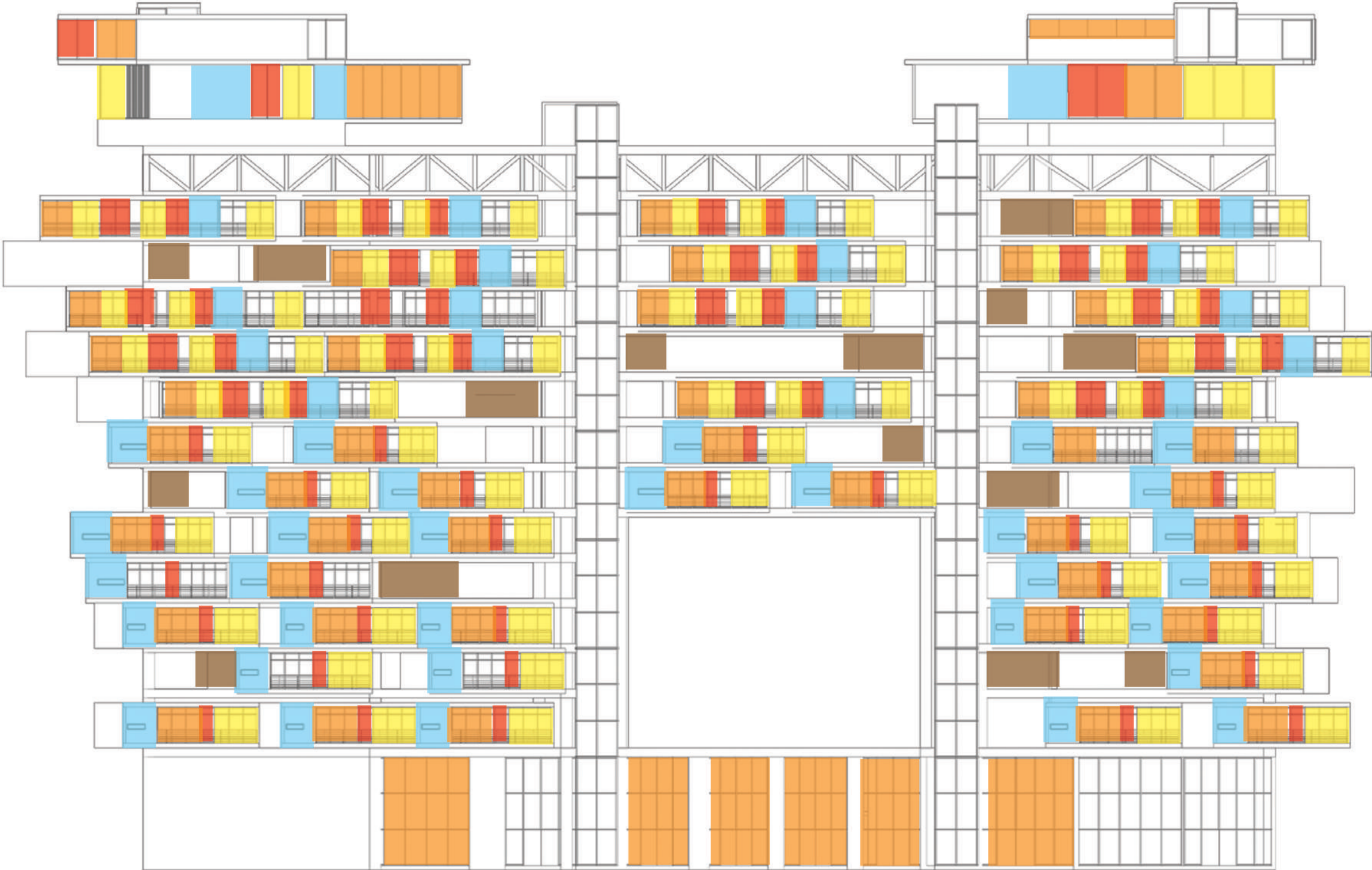
- PV PANELS
- TRANSPARENT PV
- NORMAL WINDOW/ DOOR

SUSTAINABLE SYSTEMS | AIR PURIFYING PANELS

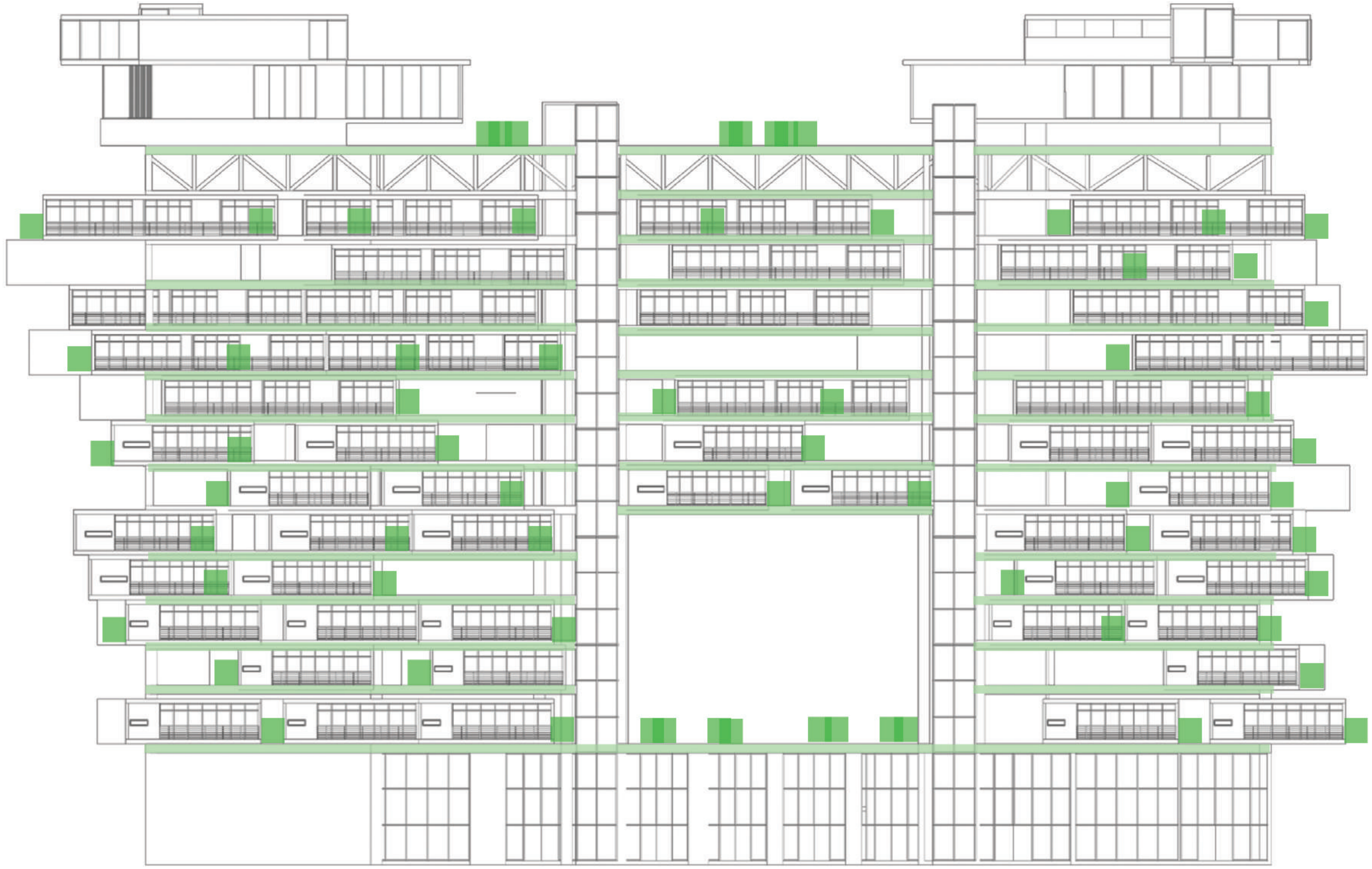




-  AIR PURIFIER PANEL
-  BRISE SOLEIL

SUSTAINABLE SYSTEMS | ENERGY + AIR PURIFIER



- PV PANELS
- TRANSPARENT PV
- NORMAL WINDOW/ DOOR
- PV PANELS
- AIR PURIFIER PANEL

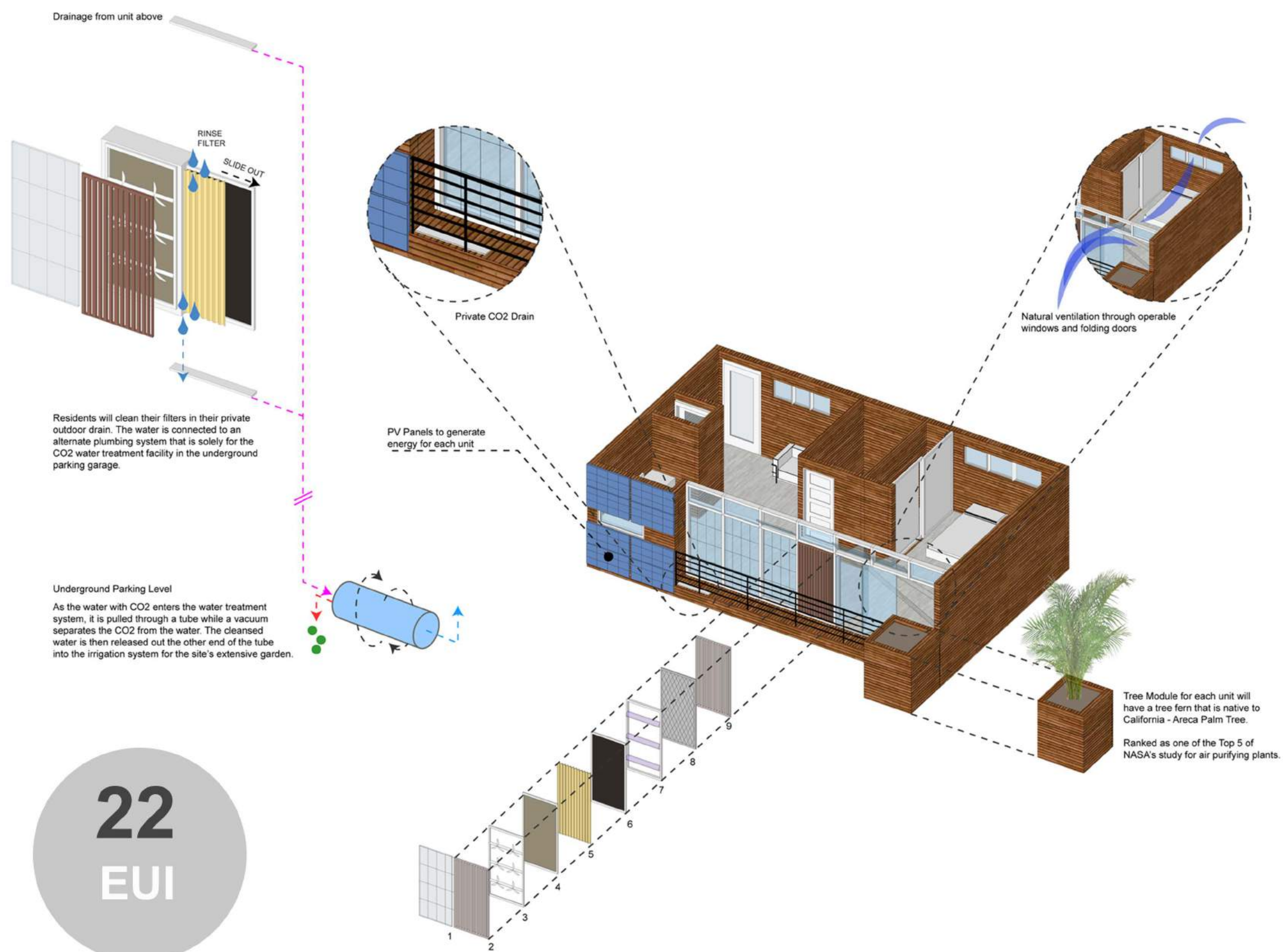


-  INTENSIVE GARDEN
-  EXTENSIVE GARDEN



# SUSTAINABLE SYSTEM

## AIR PURIFYING COMPONENTS | MODULAR



Residents will clean their filters in their private outdoor drain. The water is connected to an alternate plumbing system that is solely for the CO2 water treatment facility in the underground parking garage.

**Underground Parking Level**  
As the water with CO2 enters the water treatment system, it is pulled through a tube while a vacuum separates the CO2 from the water. The cleansed water is then released out the other end of the tube into the irrigation system for the site's extensive garden.

PV Panels to generate energy for each unit

Private CO2 Drain

Natural ventilation through operable windows and folding doors

Tree Module for each unit will have a tree fern that is native to California - Areca Palm Tree.  
Ranked as one of the Top 5 of NASA's study for air purifying plants.

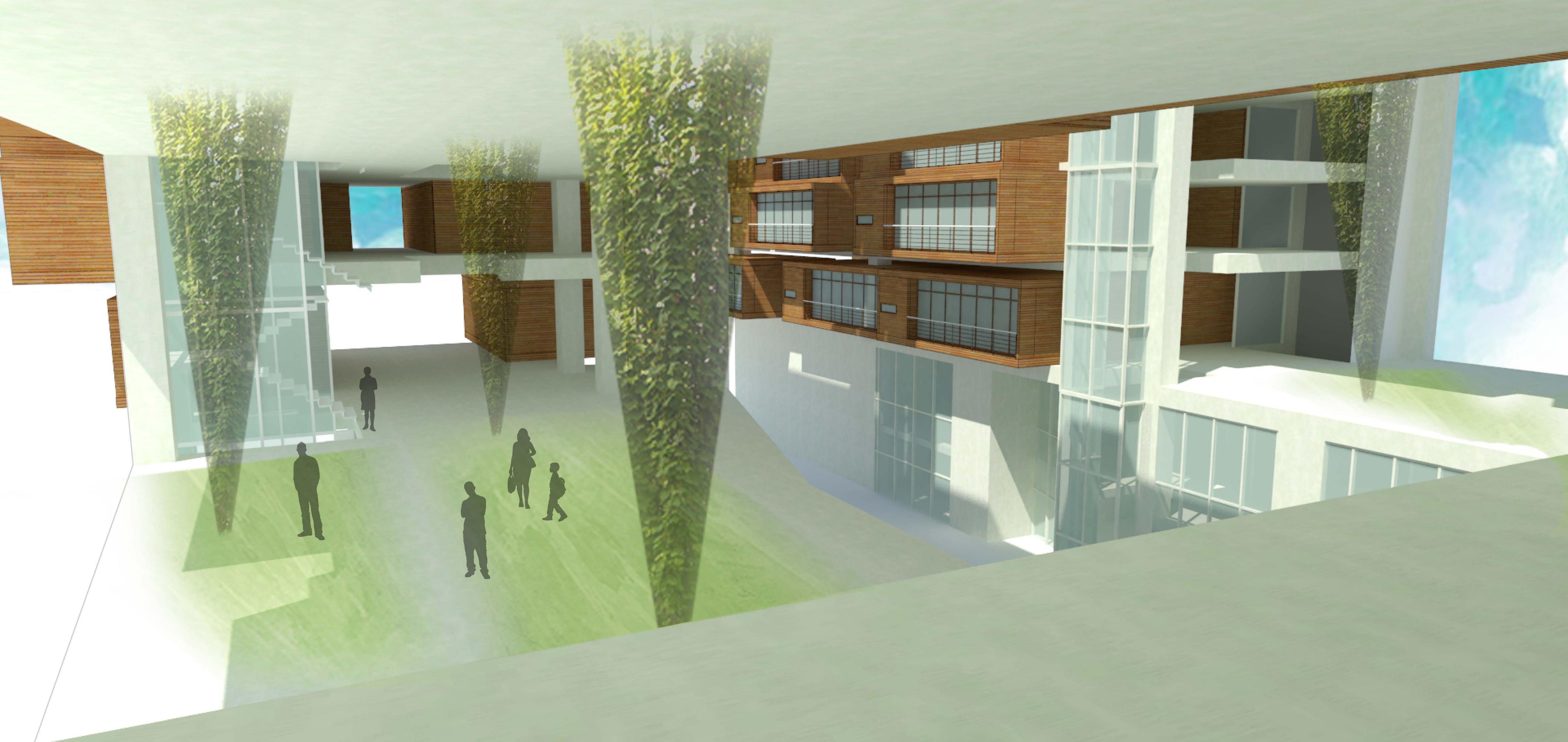
**22**  
EUI

- PV Powered Air Purifier**
1. PV Panel - - - - - to generate solar energy for the filter.
  2. Exterior Cover
  3. Fan - - - - - to pull in air to filter.
  4. Pre-Filter - - - - - to catch larger particles.
  5. HEPA Filter - - - - - to catch smaller particles.
  6. Carbon Filter - - - - - to catch odor and chemicals.
  7. UV Bulb - - - - - to activate the titanium oxide paint to absorb carbon/pollutants.
  8. Titanium Oxide Panel
  9. Interior Cover







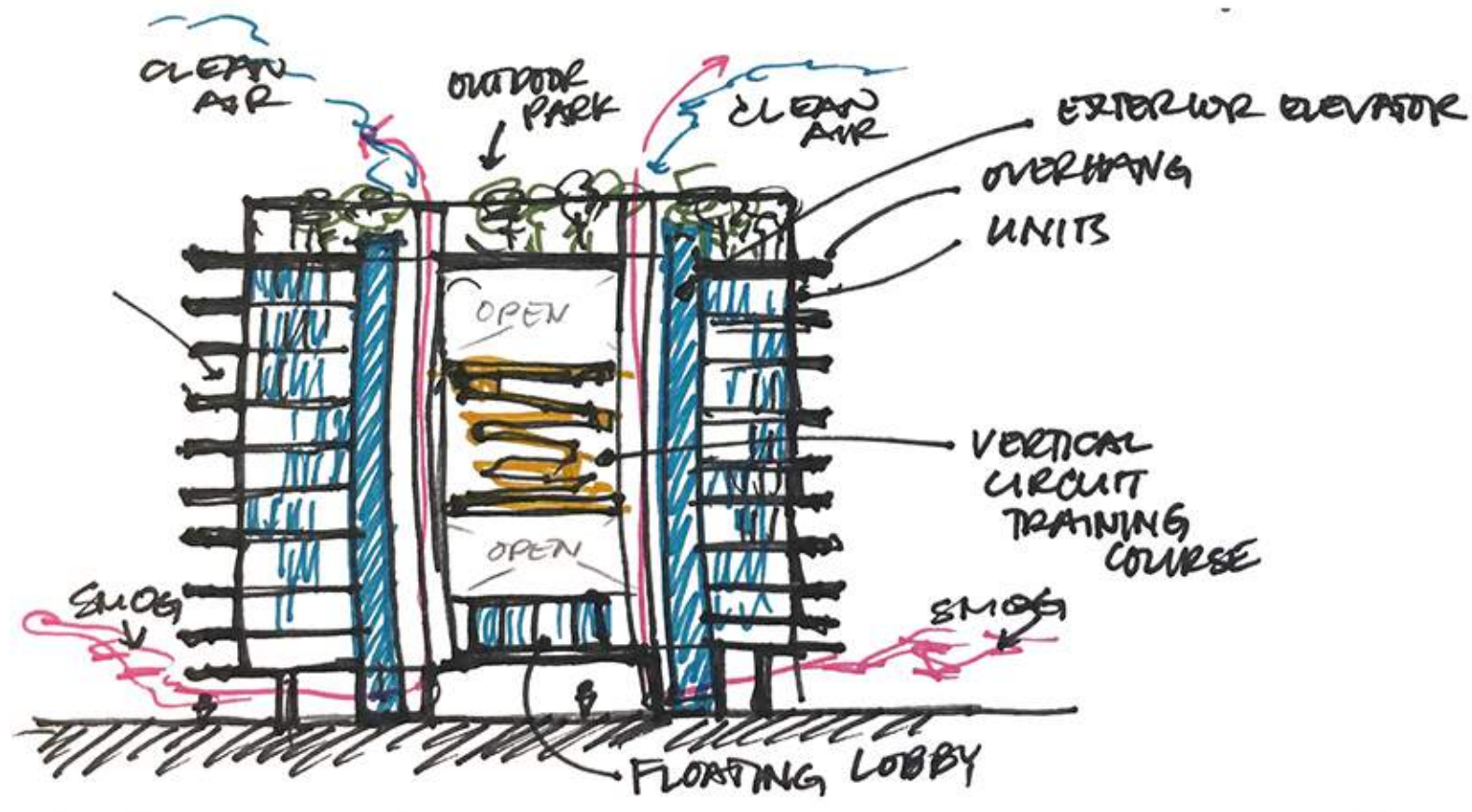


# AIR PURIFIER

## DESIGN PROGRESS + DRAWINGS

STEPHANIE CORTES | CARMELLE LUMINARIAS

### CONCEPT



### ELEVATION



### PROPOSED PROGRAM

#### BUILDING INFO

1200 S. GRAND AVE.  
LOS ANGELES  
MIX-USE  
# SQ  
11-STORY

#### PRIVATE

STUDIO  
1-BEDROOM  
2-BEDROOM  
PENTHOUSE

#### COMMUNAL

GYM  
PARK 02  
CONF. ROOM  
EVENT ROOM  
PARKING

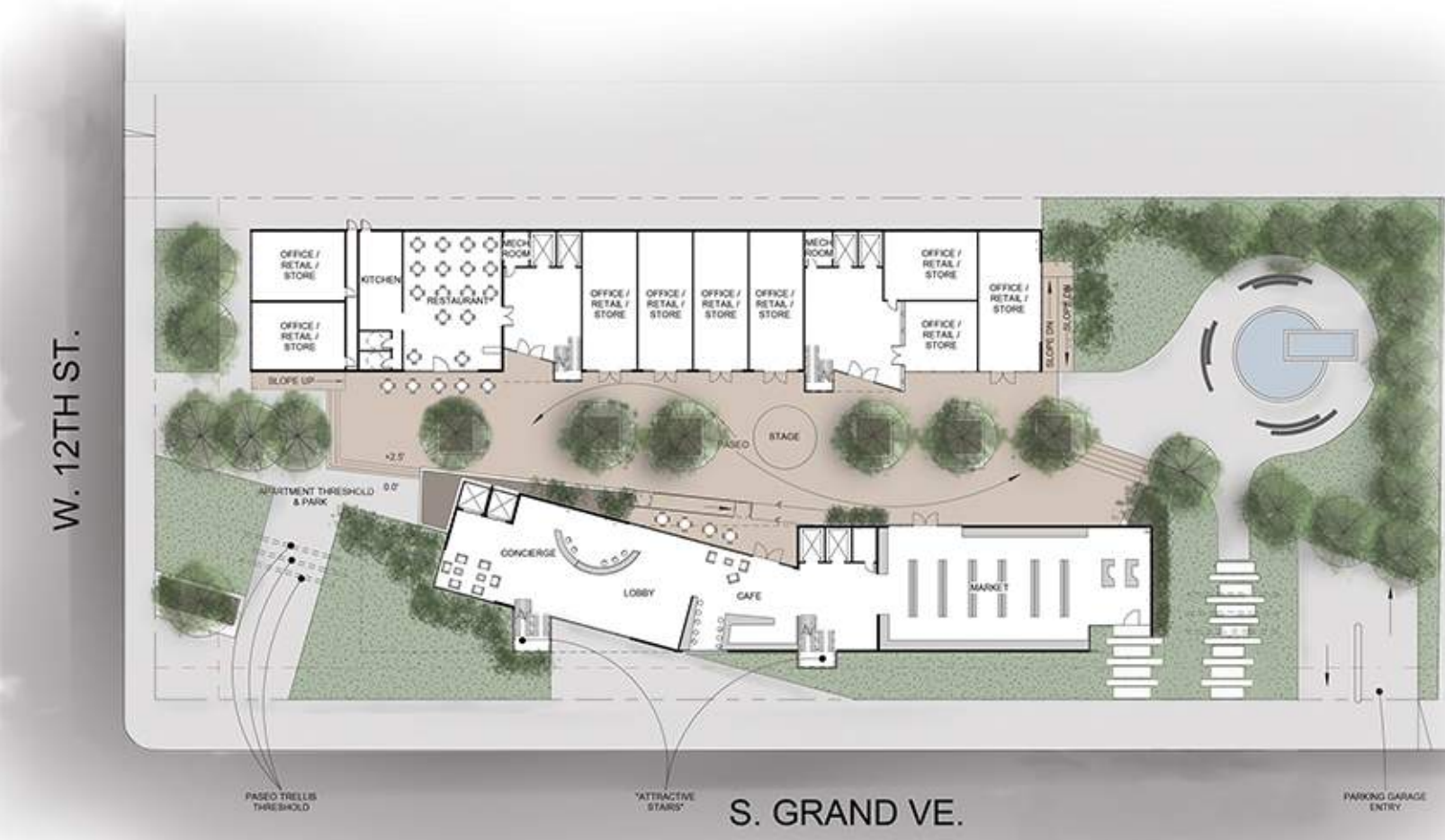
#### PUBLIC

PARK 01  
SHOPS  
CAFE  
MARKET  
OFFICE

### SITE PLAN



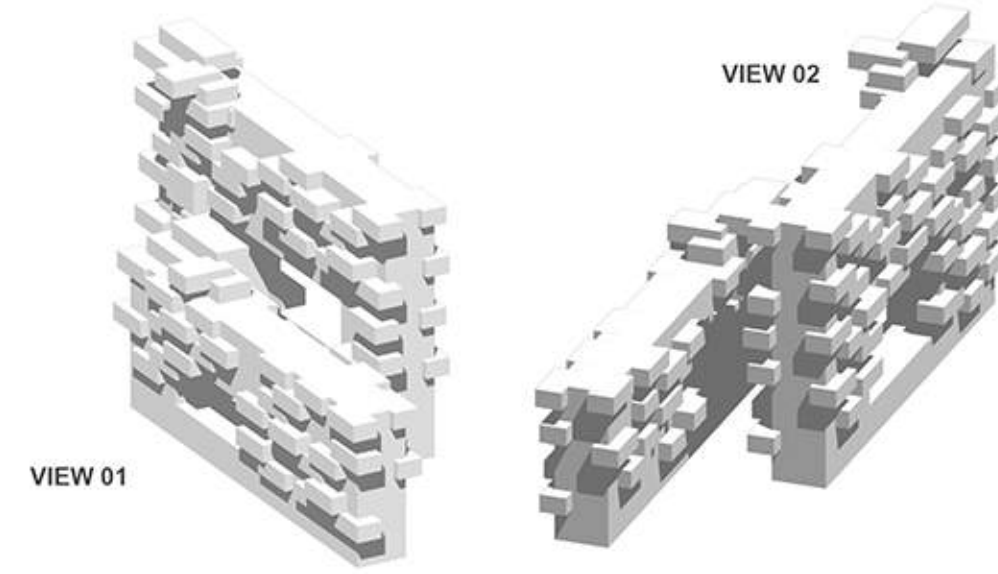
### GROUND PLAN



### DESIGN ELEMENTS

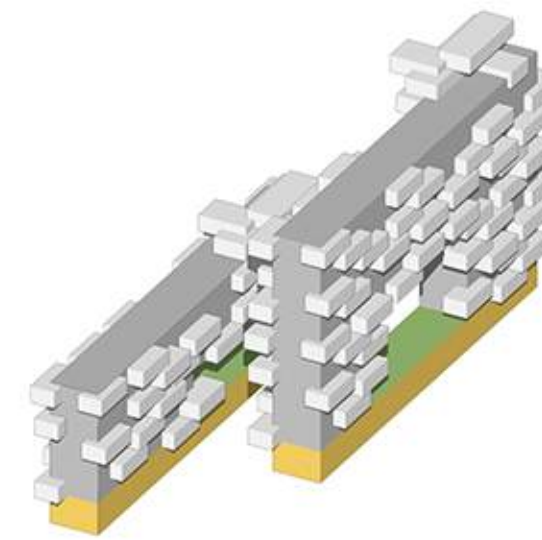
- FLOATING PLANES
- OFFSETTING PLANES
- TRANSPARENCY
- MODULAR
- PERFORATIONS
- CANOPIES

### MASSING

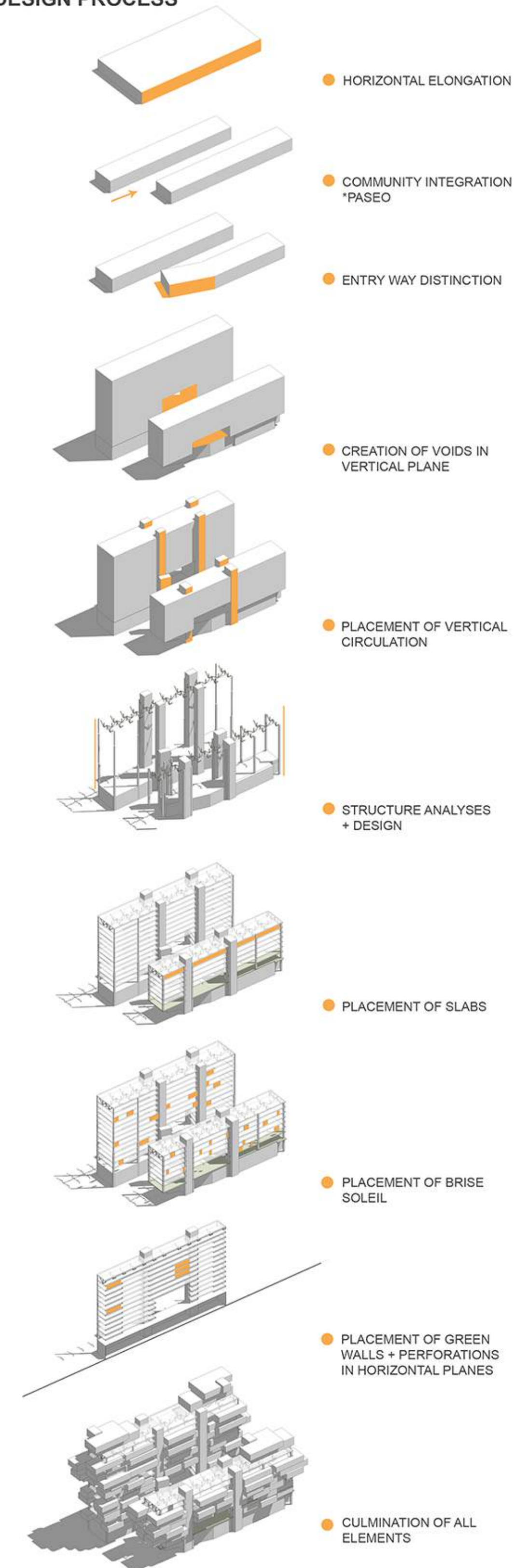


### PROGRAM DIAGRAM

- PUBLIC
- GREEN SPACE
- COMMUNAL
- PRIVATE

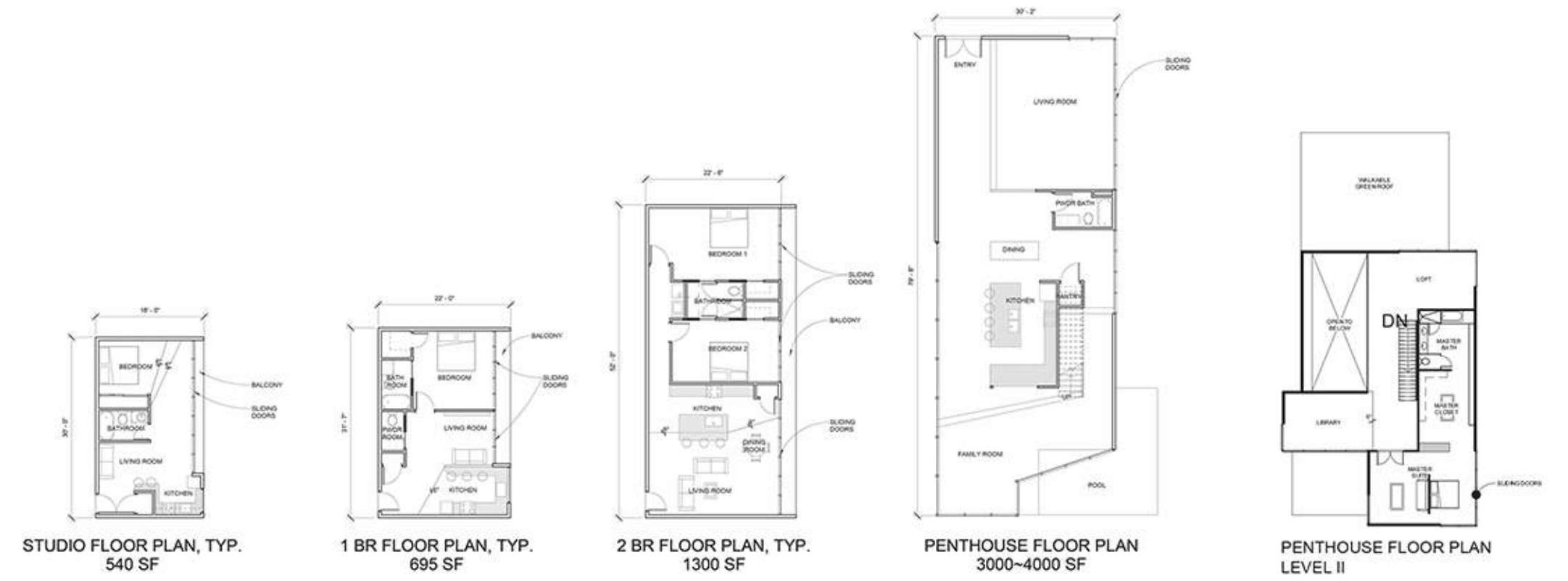


### DESIGN PROCESS

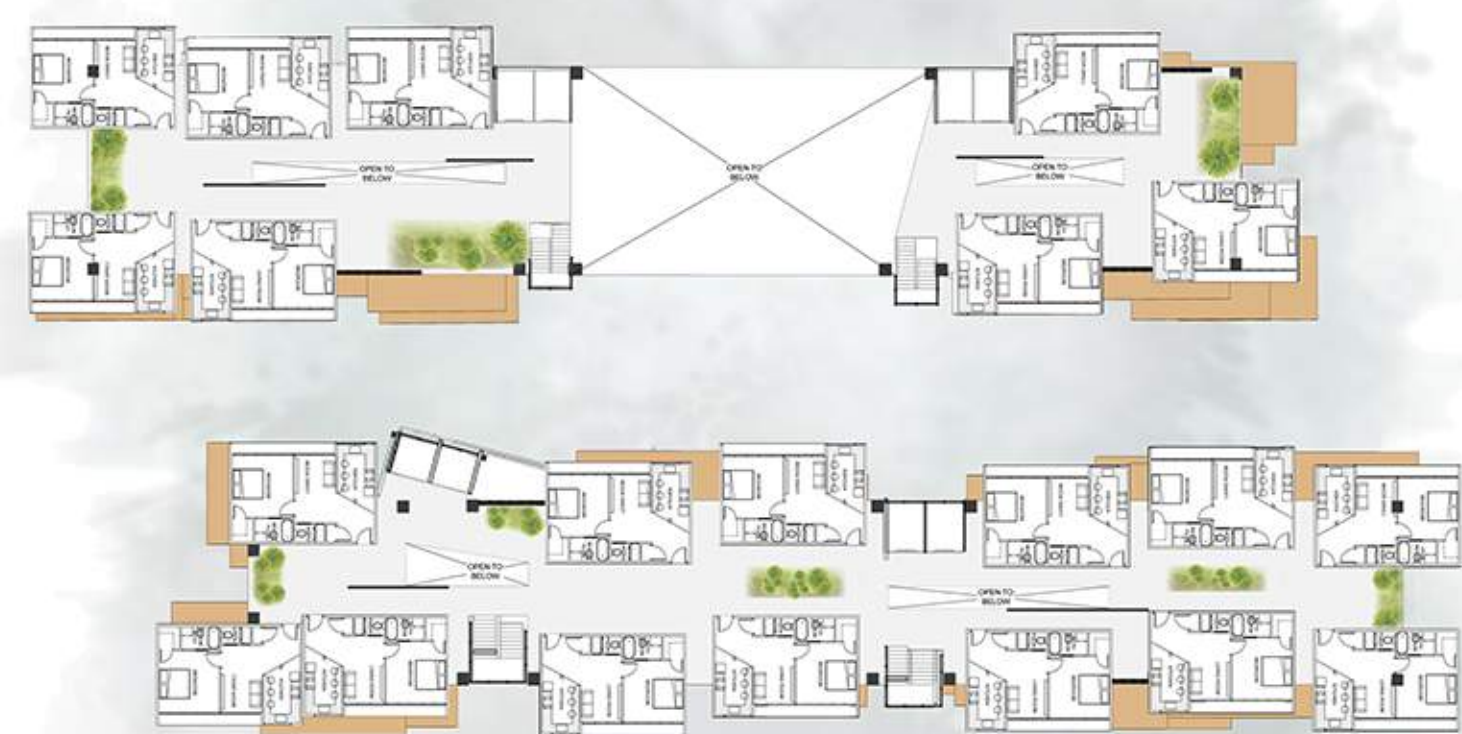


PARCEL MAP

### UNIT PLANS



### TYPICAL FLOOR PLANS



# AIR PURIFIER

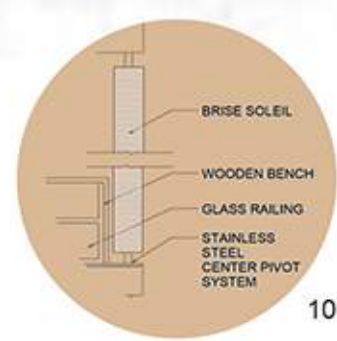
## SUSTAINABILITY + CARBON + SIMULATIONS

STEPHANIE CORTES | CARMELLE LUMINARIAS

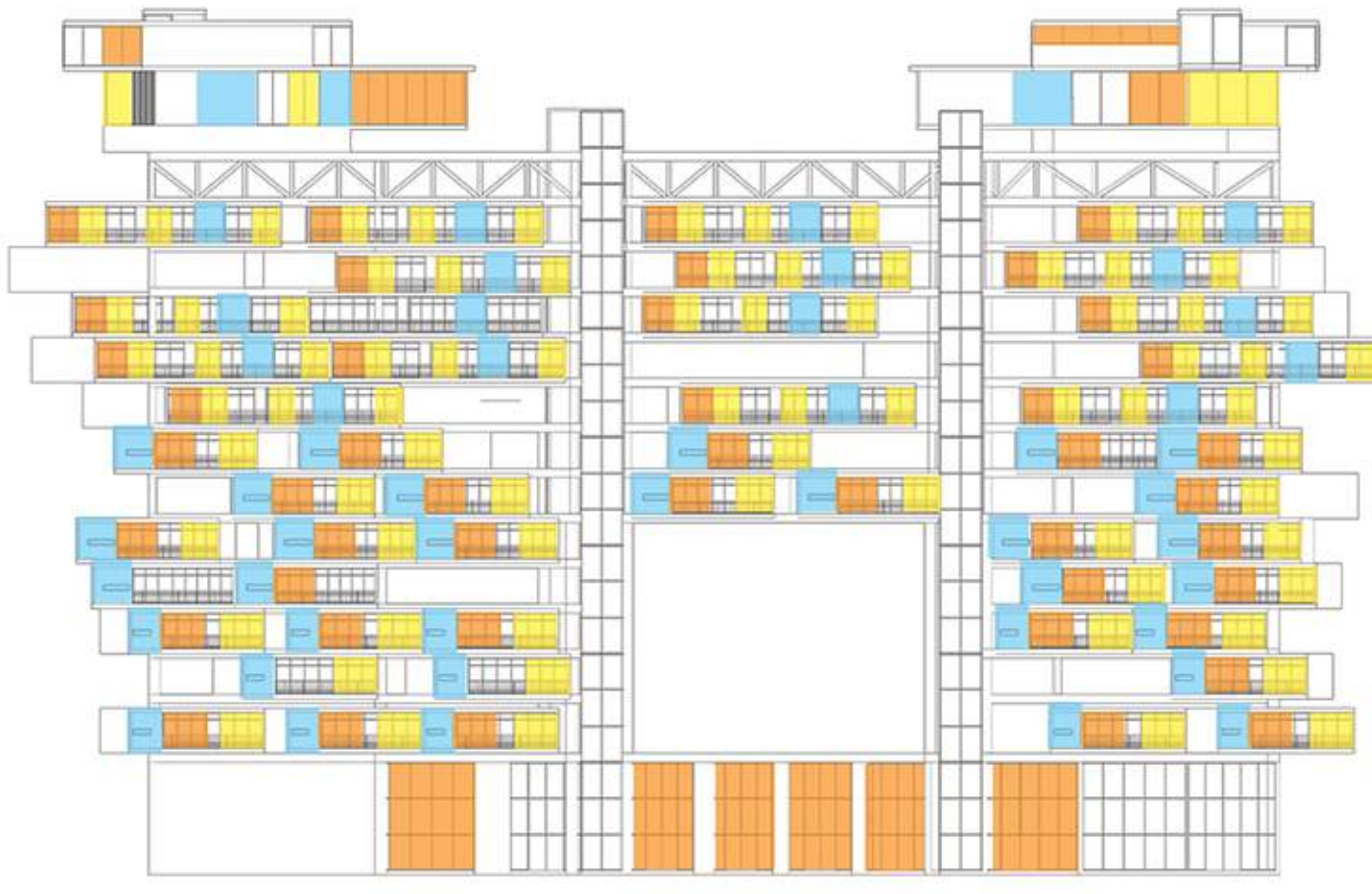
### SECTION

#### SUSTAINABLE SYSTEMS

- 1. PASSIVE VENTILATION
- 2. BUILDING AIR FILTRATION
- 3. MODULAR UNIT FILTRATION PANEL
- 4. WIND TREE/ TURBINES
- 5. PV WALL CLADDING
- 6. PV PANELS/ TRANSPARENT PANELS
- 7. OPERABLE SUN SHADING
- 8. REUSABLE WATER
- 8. MODULAR WOOD UNITS
- 9. CARBON ABSORPTION WOOD/ BRISE SOLEIL
- 10. TITANIUM DIOXIDE COATING
- 12. INTENSIVE GARDEN/ GREENSPACE
- 13. EXTENSIVE GARDEN/ GREENSPACE
- 14. LIVING/ ACTIVE GREEN WALL
- 15. GREEN WALL/ HANGING GARDEN



### SUSTAINABLE SYSTEM | ENERGY



- PV PANELS
- TRANSPARENT PV
- NORMAL WINDOW DOOR

### SUSTAINABLE SYSTEM | AIR PURIFIER



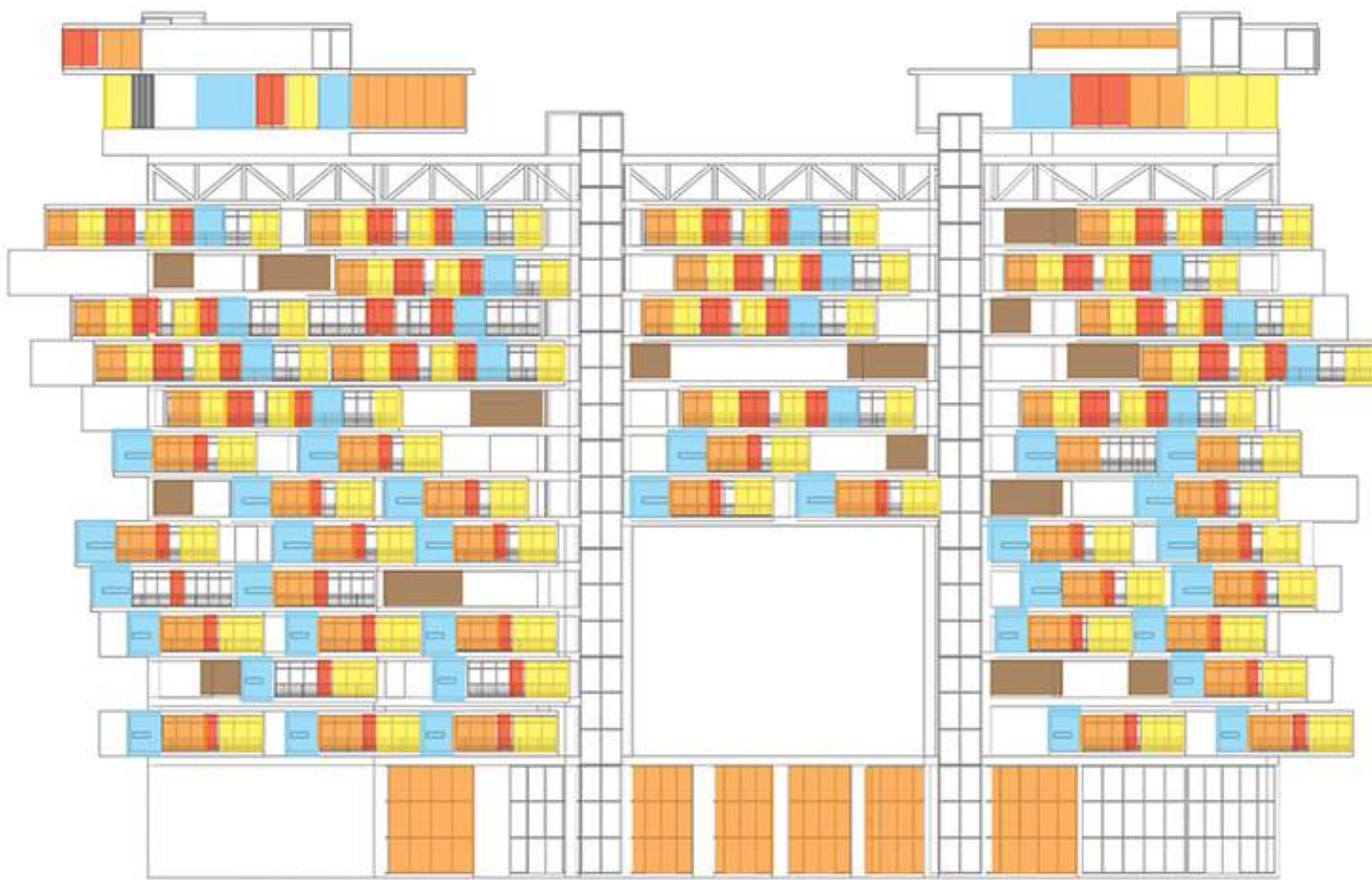
- AIR PURIFIER PANEL
- BRISE SOLEIL

### SUSTAINABLE SYSTEM | GREENSCAPE



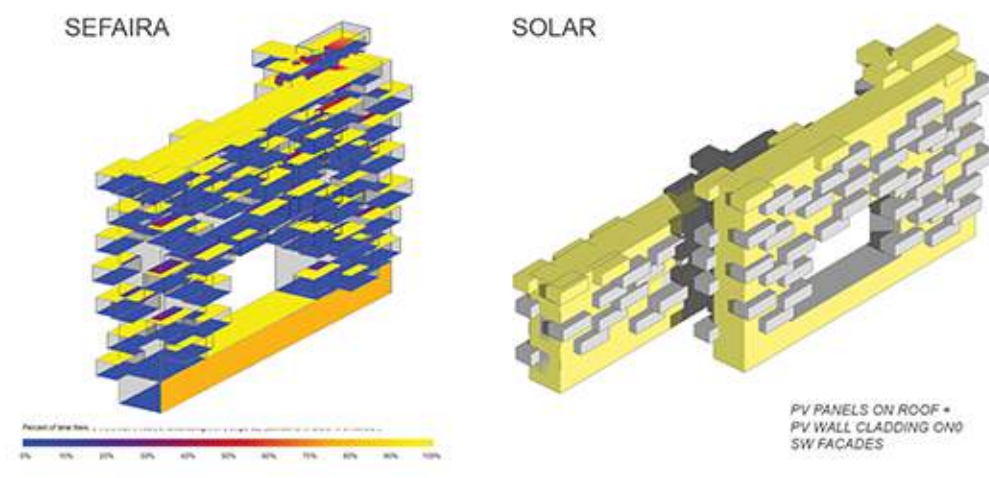
- INTENSIVE GARDEN
- EXTENSIVE GARDEN

### SUSTAINABLE SYSTEM | COMBINED SYSTEMS



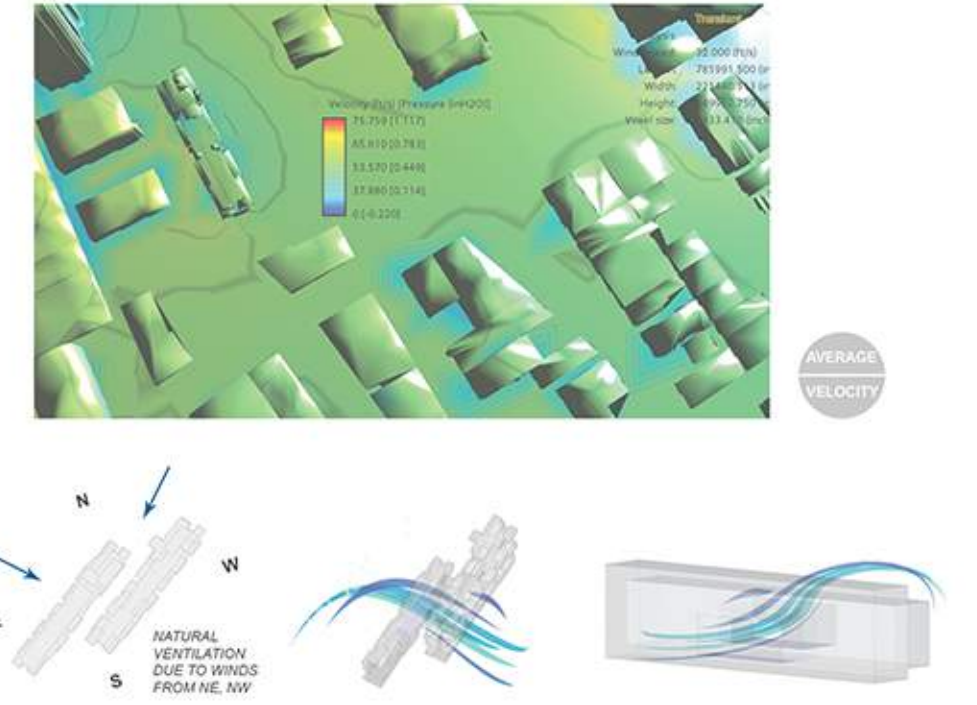
- PV PANELS
- TRANSPARENT PV
- NORMAL WINDOW DOOR
- PV PANELS
- AIR PURIFIER PANEL

### SOLAR ANALYSIS

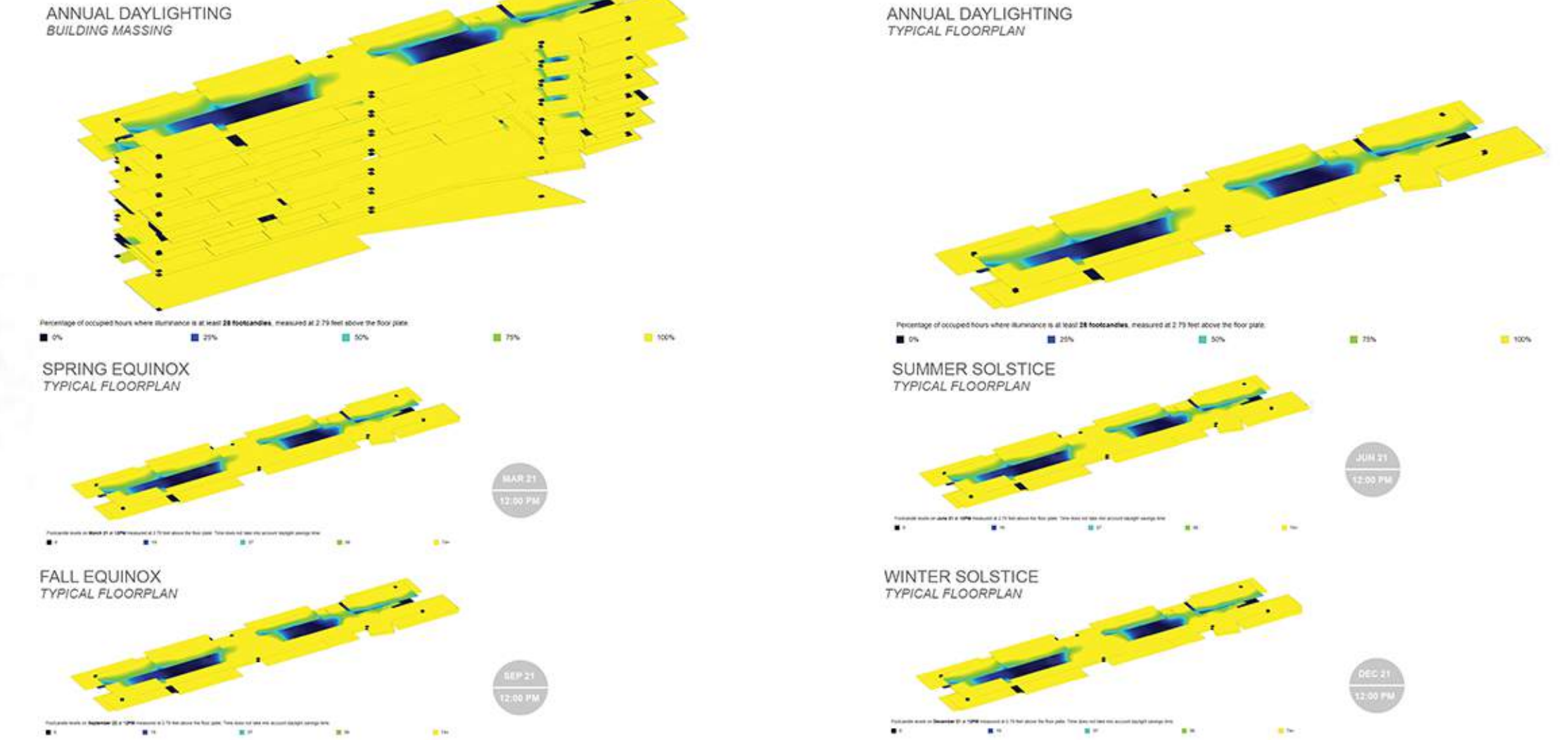


### WIND ANALYSIS

AUTODESK | FLOW DESIGN

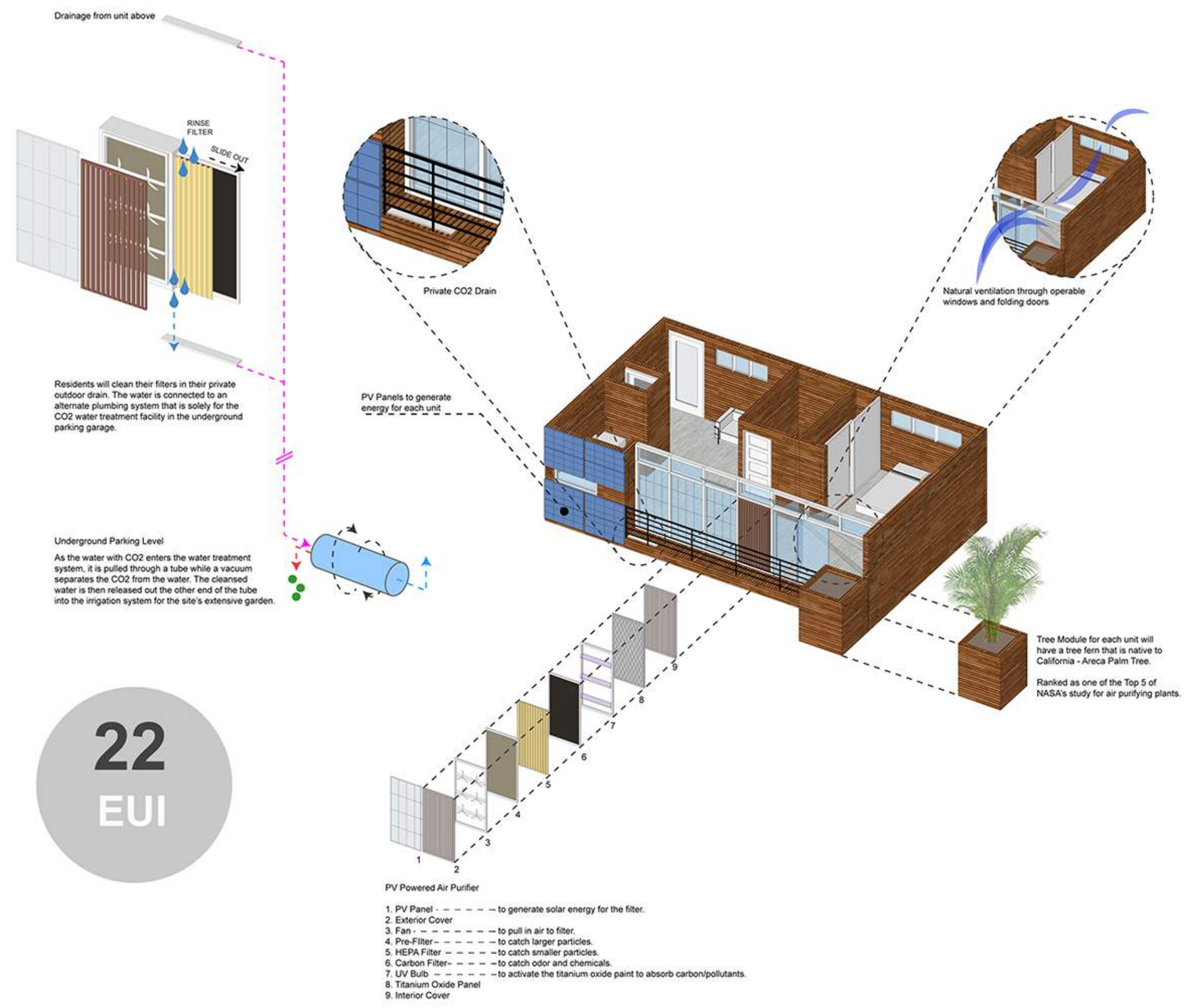


### DAYLIGHT ANALYSIS



### SUSTAINABLE SYSTEM

#### AIR PURIFYING COMPONENTS | MODULAR



### GROUND LEVEL VIGNETTE



### INDOOR VIGNETTE

