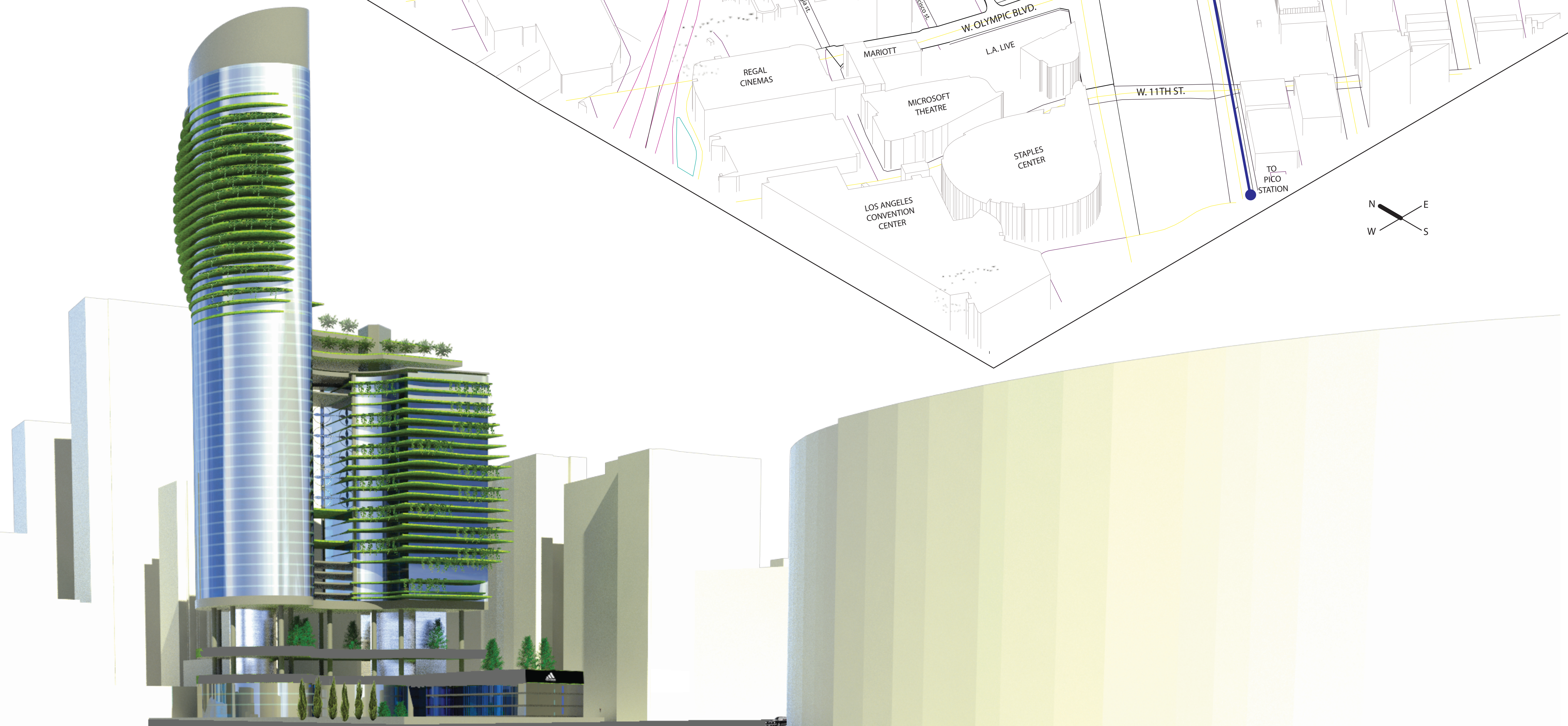
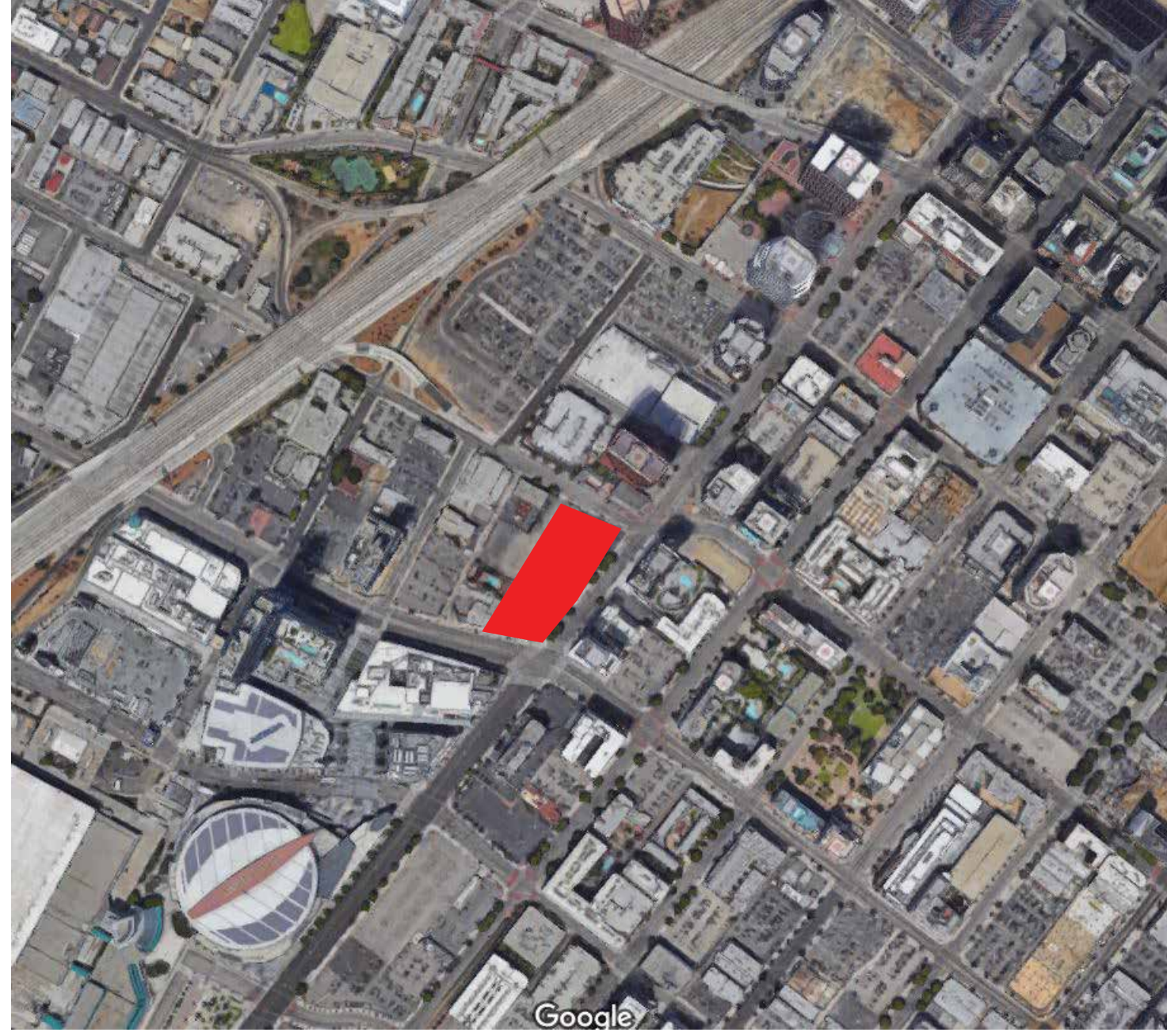
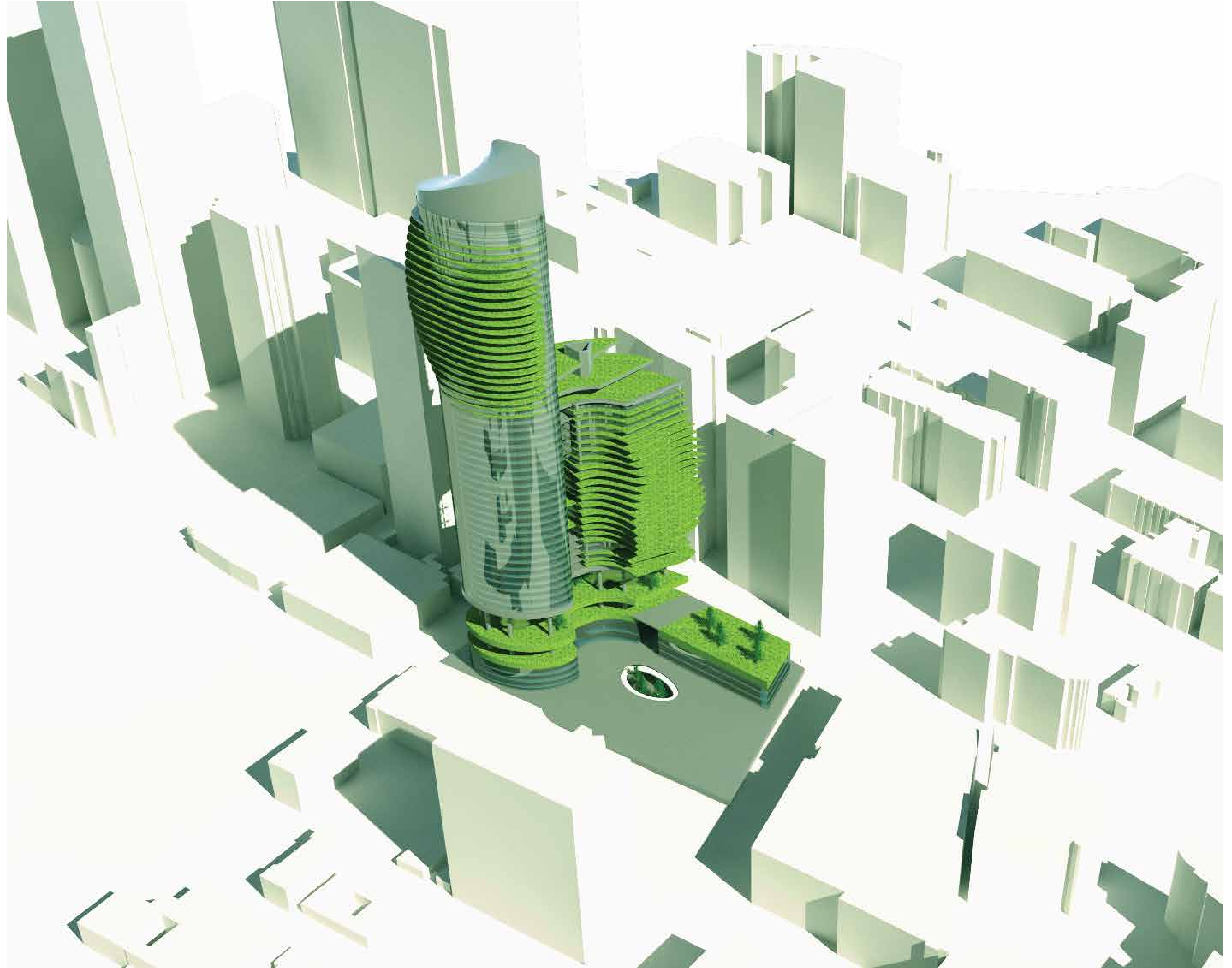


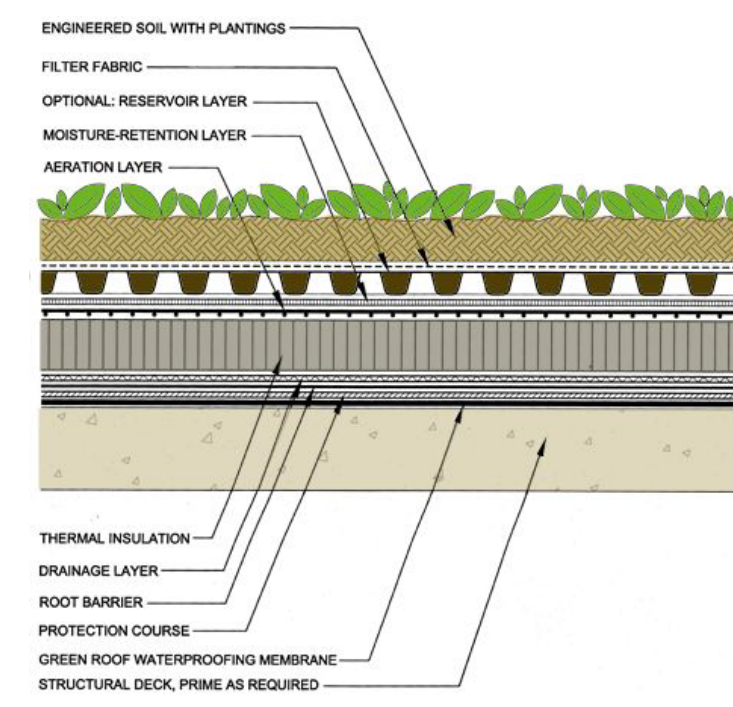
LOT LOCATION 



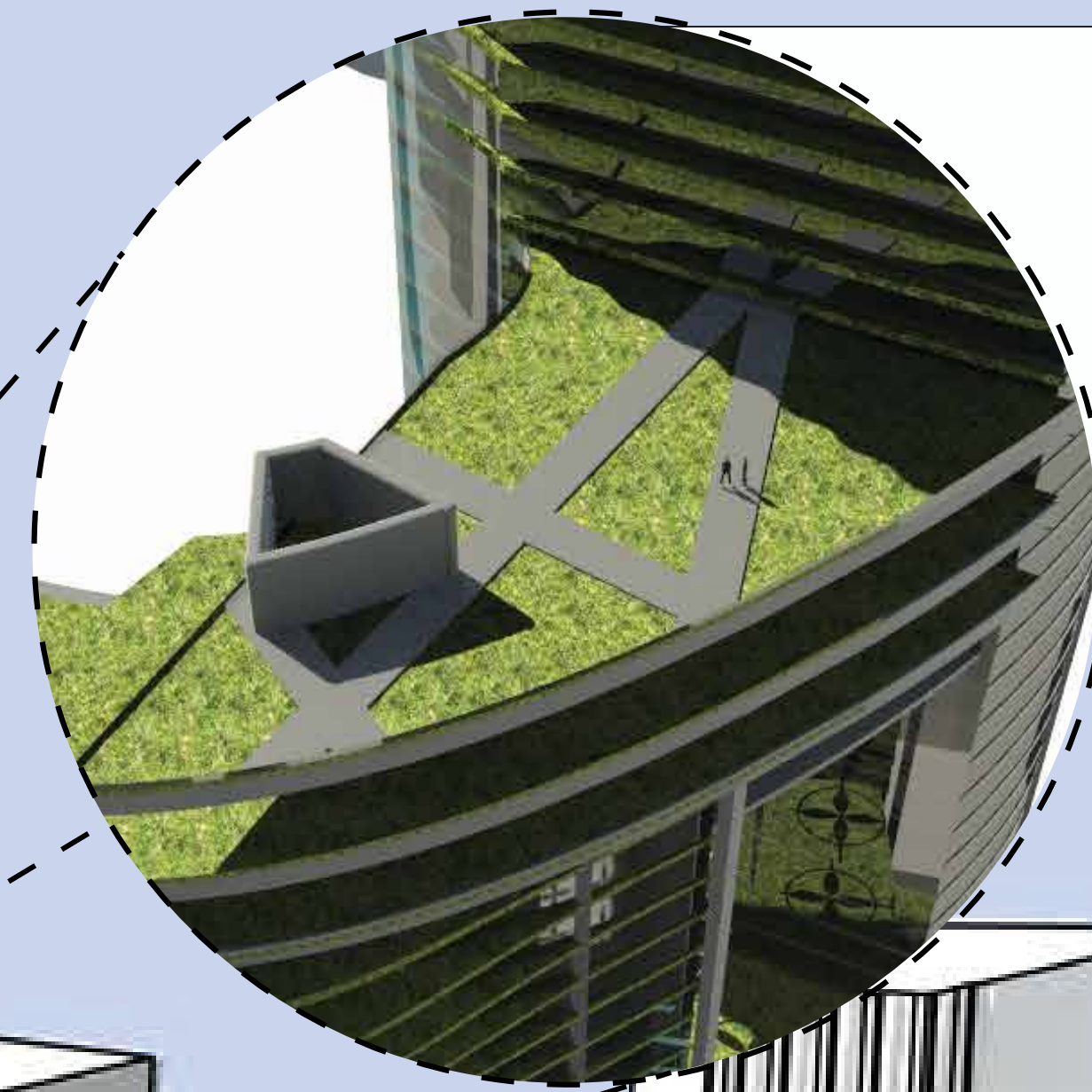
The overall shape for the tower is inspired by the biomimicry process. The building generated its geometry from a combination of providing natural light to each residential unit, to create greenspaces and to guide natural winds towards the central portion of the sustainable skyscraper where numerous large wind turbines generate life to the building. The turbines lay at the heart of the building aid in the net zero goals of this conceptual tower, in addition a solar panel skin is also applied to the areas of the building where sun exposure is optimal.



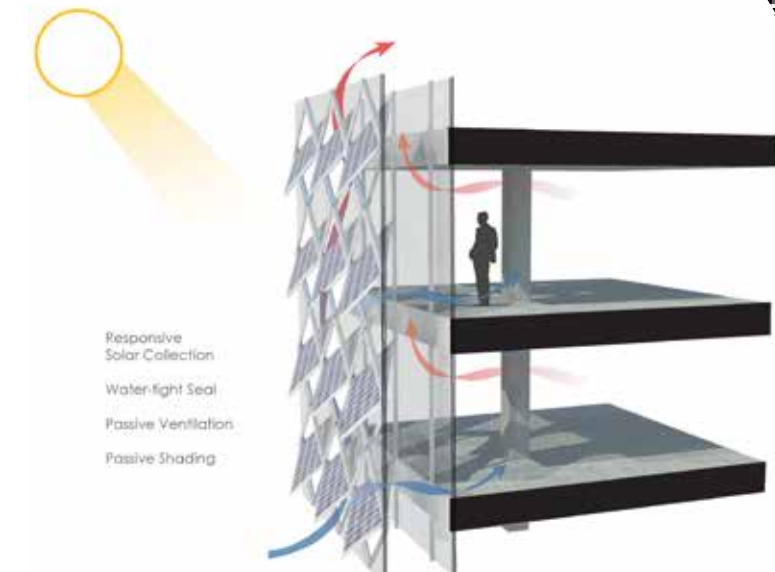
- EXTENSIVE GREEN SLABS
- CANTILEVER BALCONIES
- RAIN TRICKLE-DOWN IRRIGATION



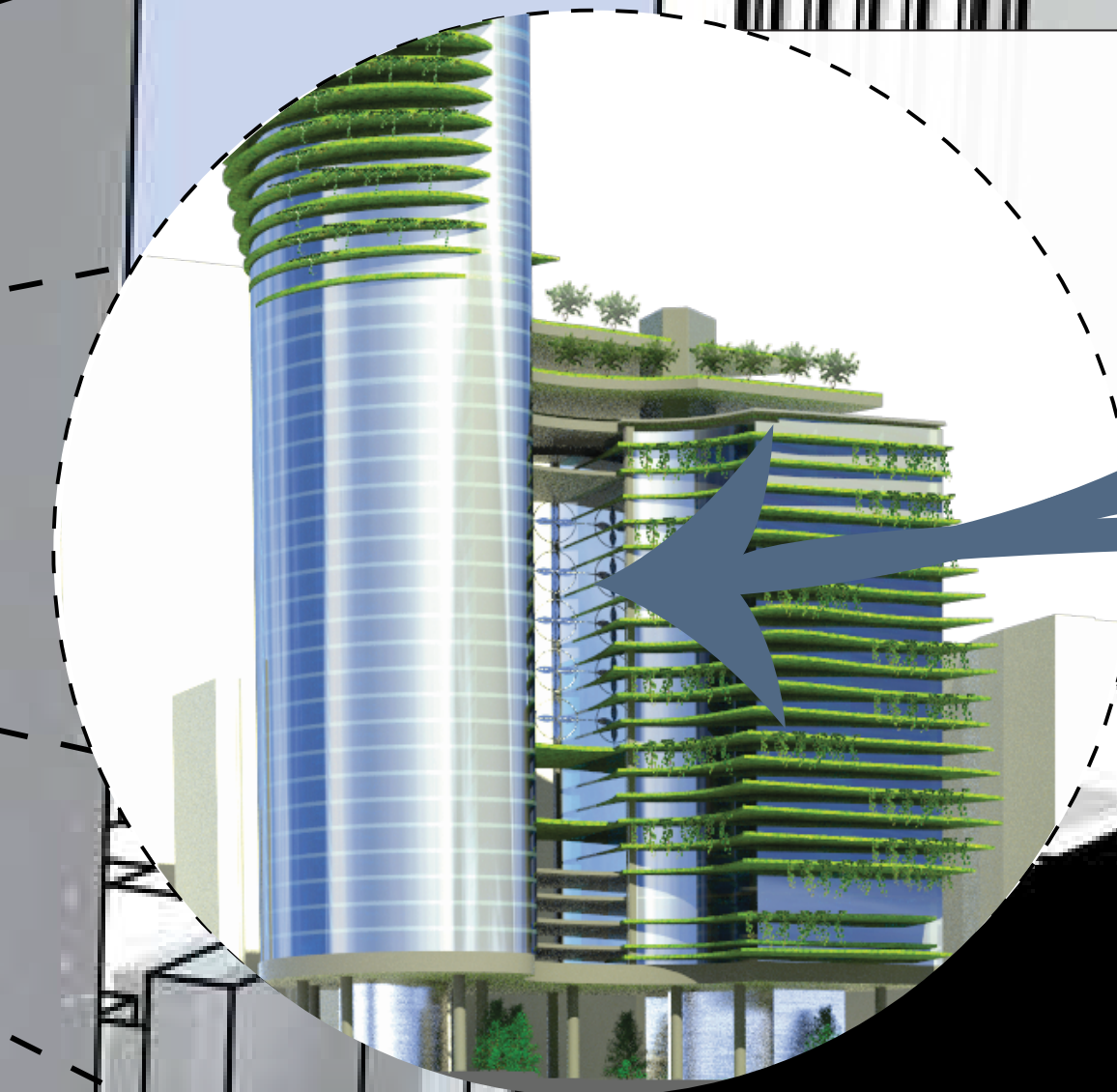
- SKY GARDEN
- COMMON SPACE
- PRIVATE EVENTS



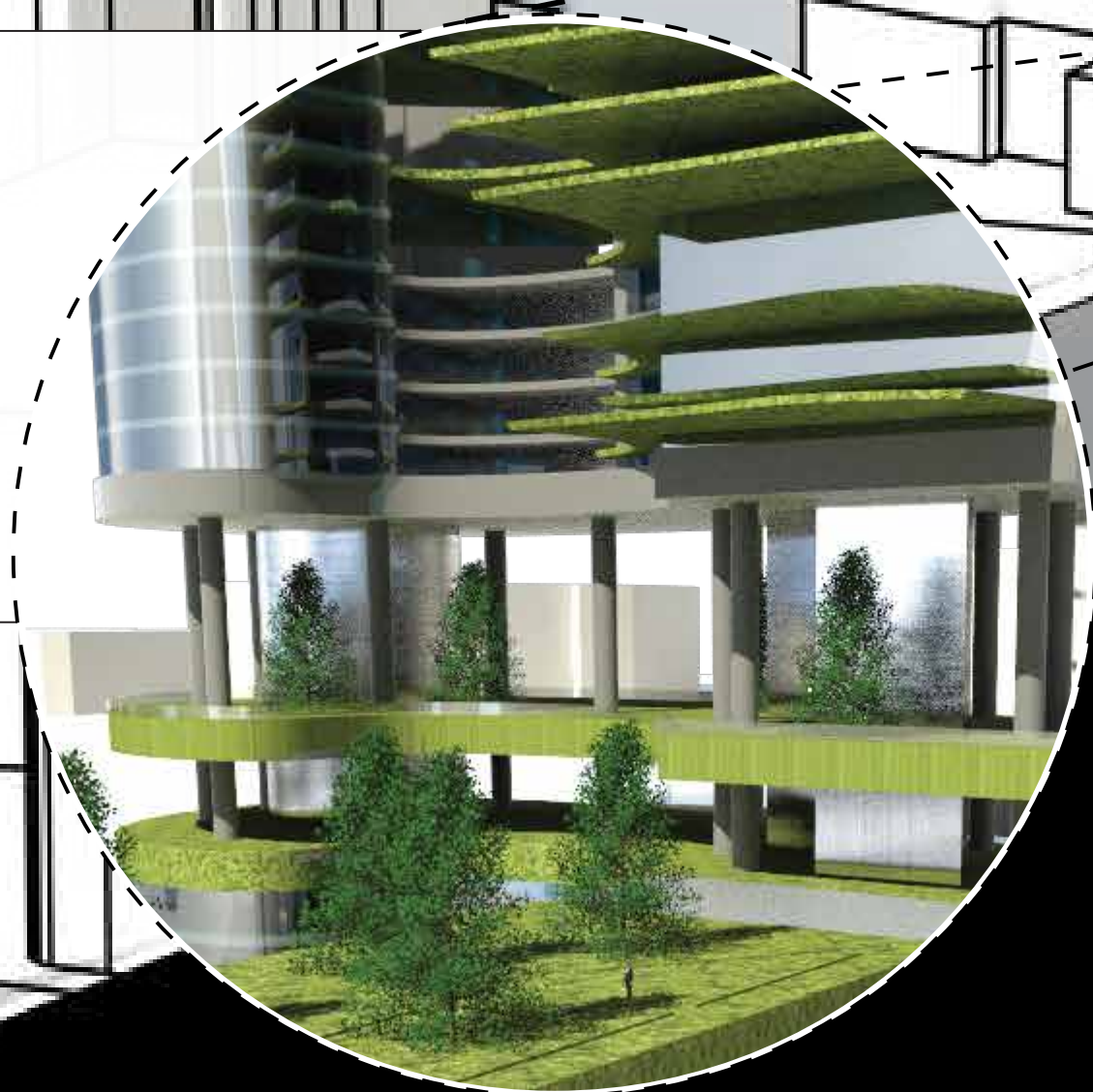
- RESPONSIVE SOLAR PANELS
- SHADING
- DOUBLE SKIN VENTILATION



- U SHAPED WIND DIRECTION
- LARGE WIND TURBINES
- SOUTHERN WINDS AT HIGH ALTITUDE

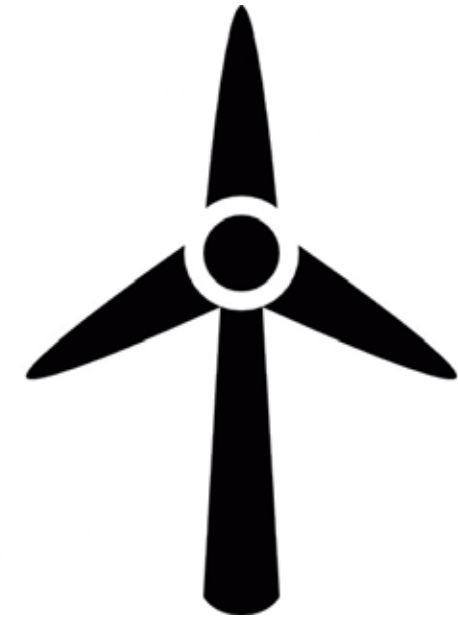


- GRAND COMMON GREEN SPACE
- LARGE TREES
- CLEAN AIR FOR SOLAR CHIMNEY

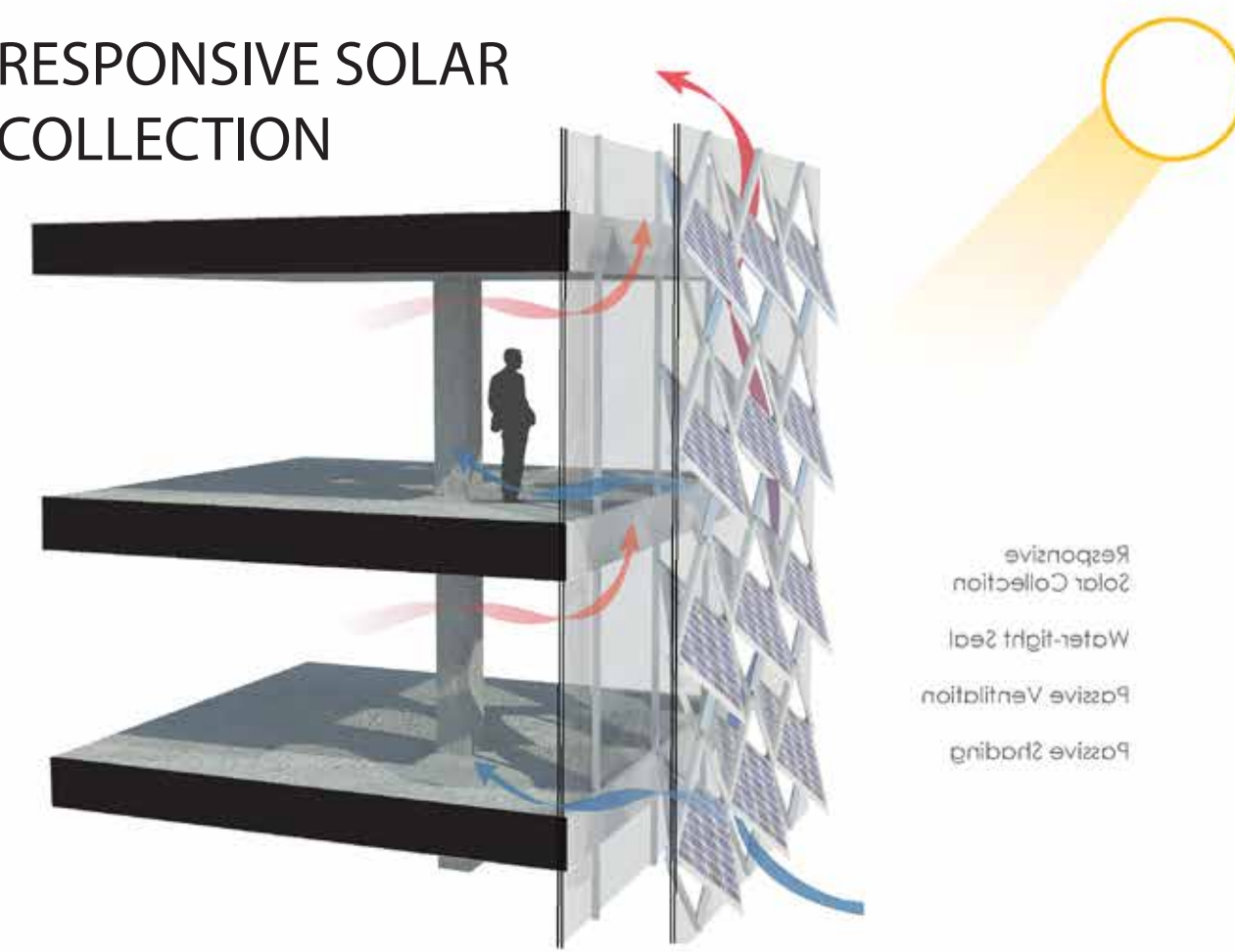


- VERTICAL GREEN
- CANTILEVER BALCONIES
- RAIN TRICKLE-DOWN IRRIGATION





RESPONSIVE SOLAR COLLECTION

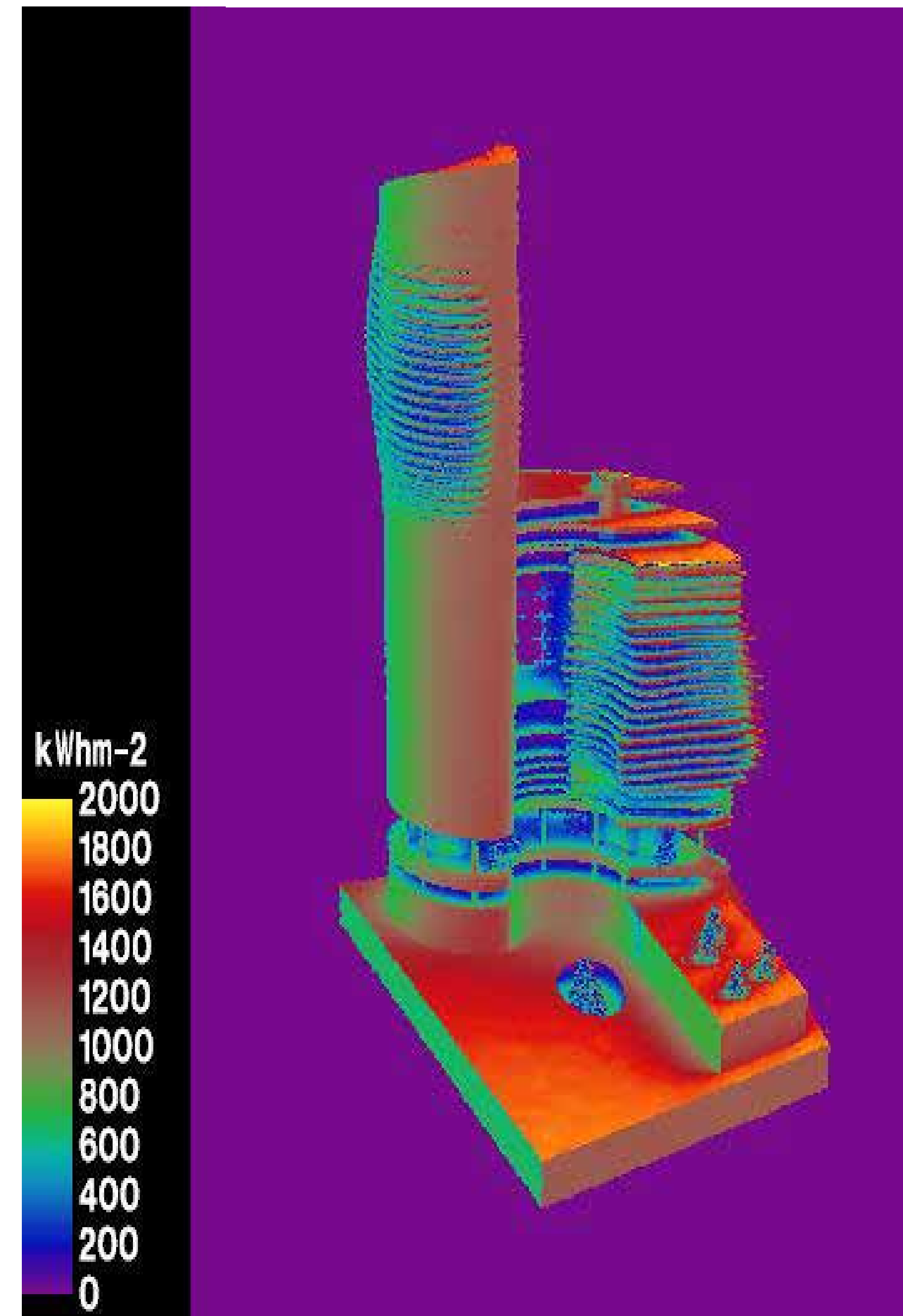
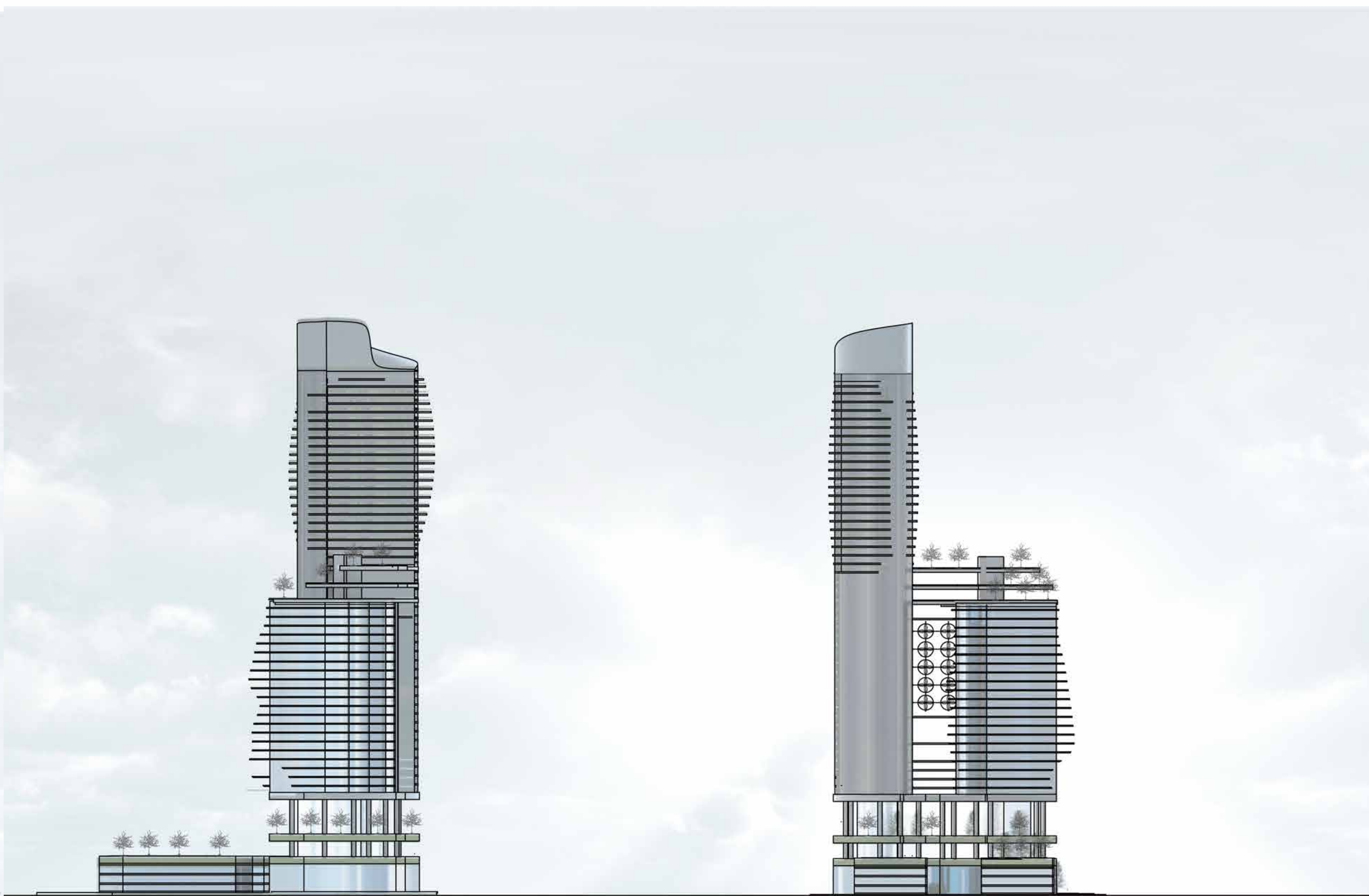
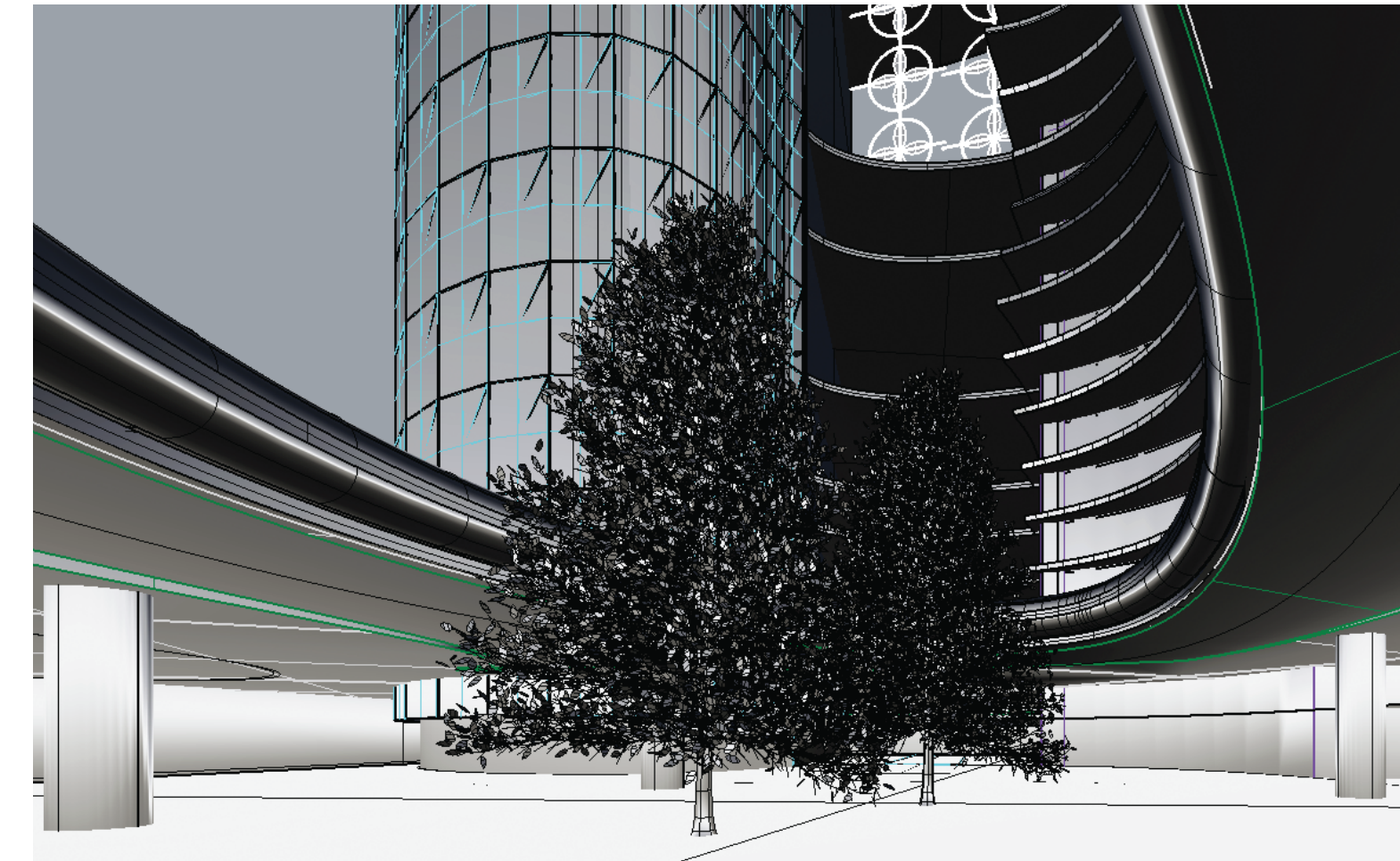


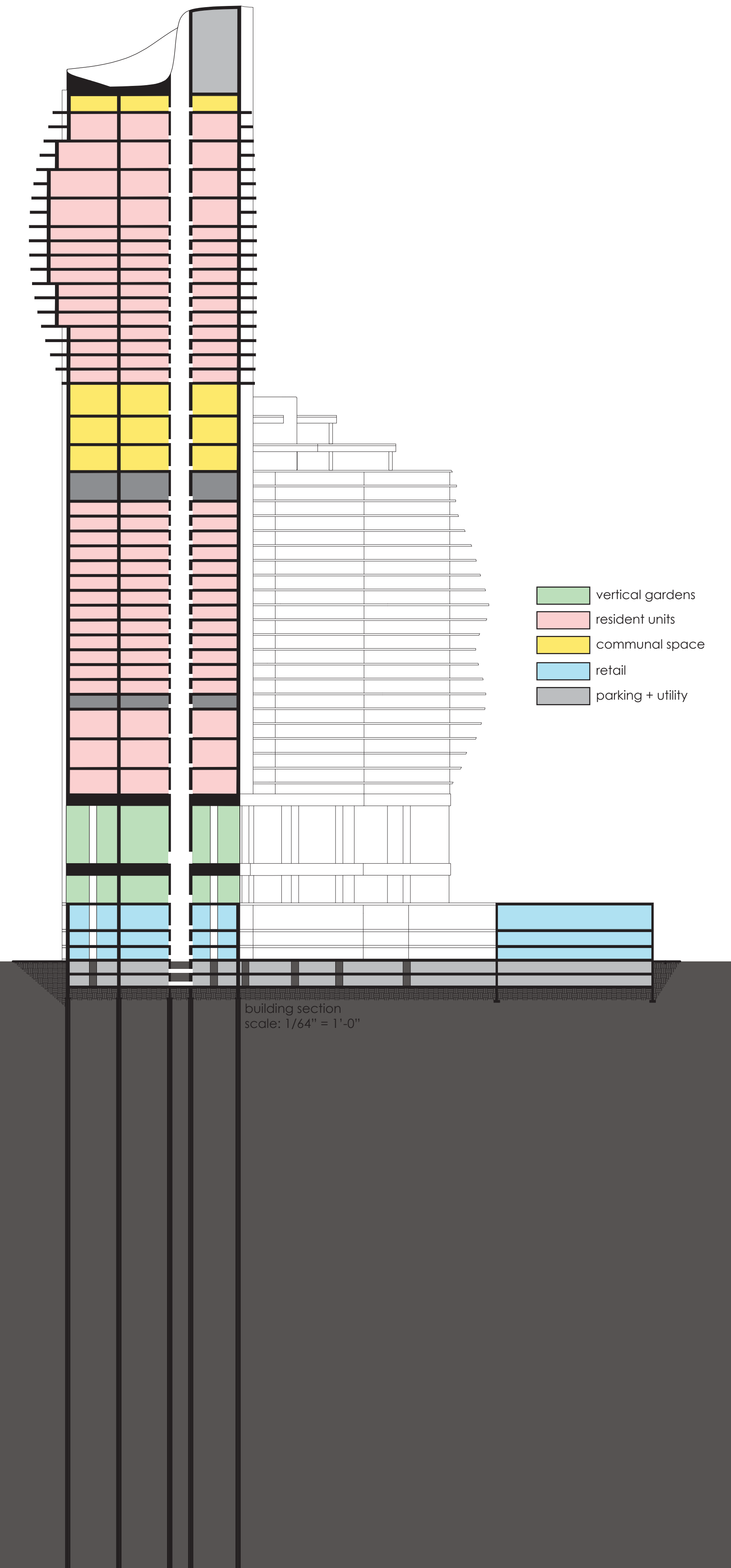
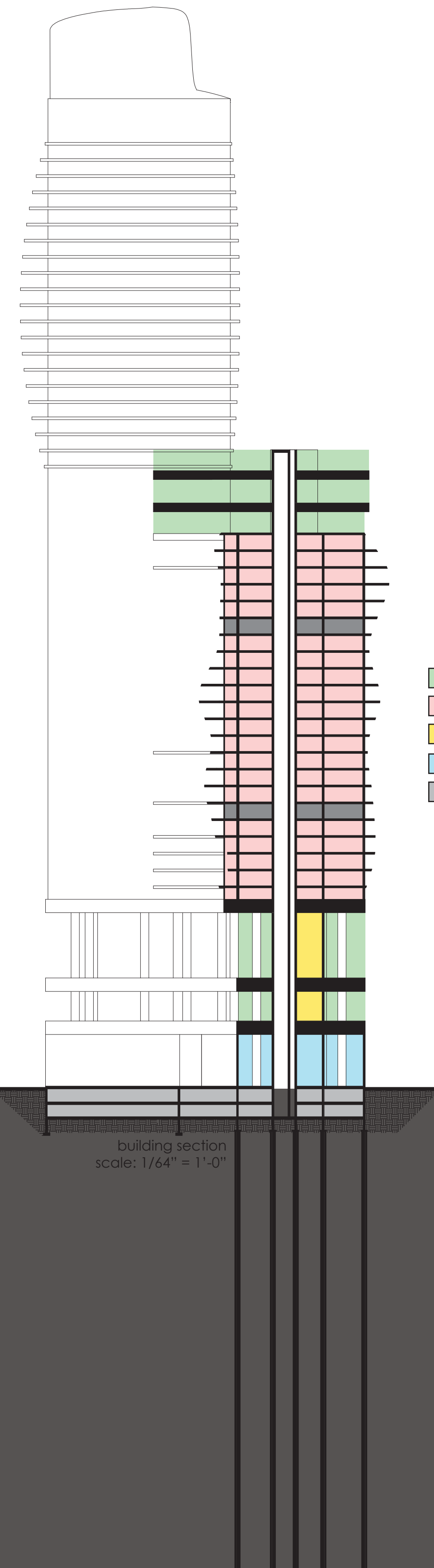
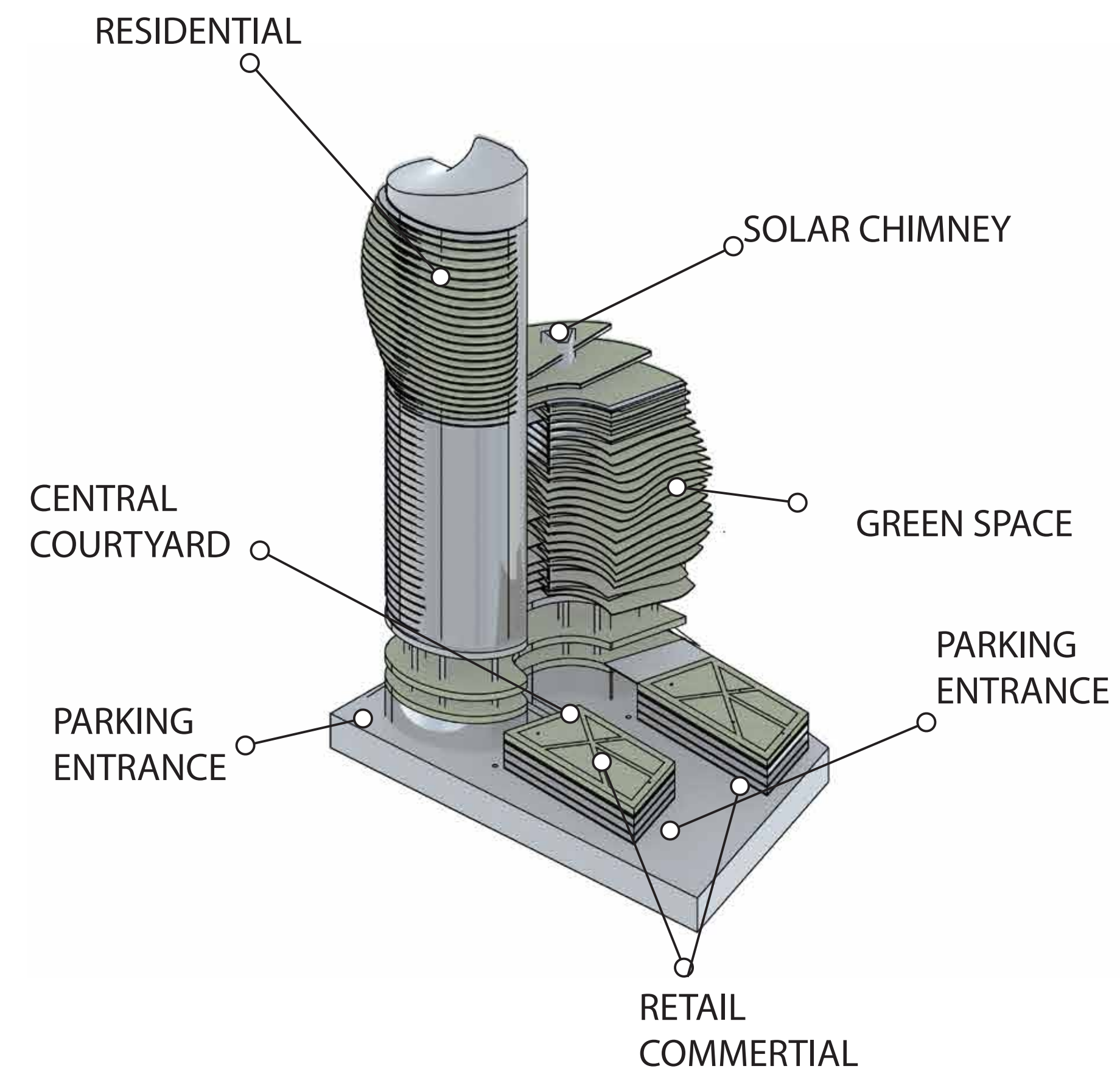
Responsive Solar Collection
Water-tight Seal
Positive Ventilation
Positive Shading

EXTENSIVE ROOF

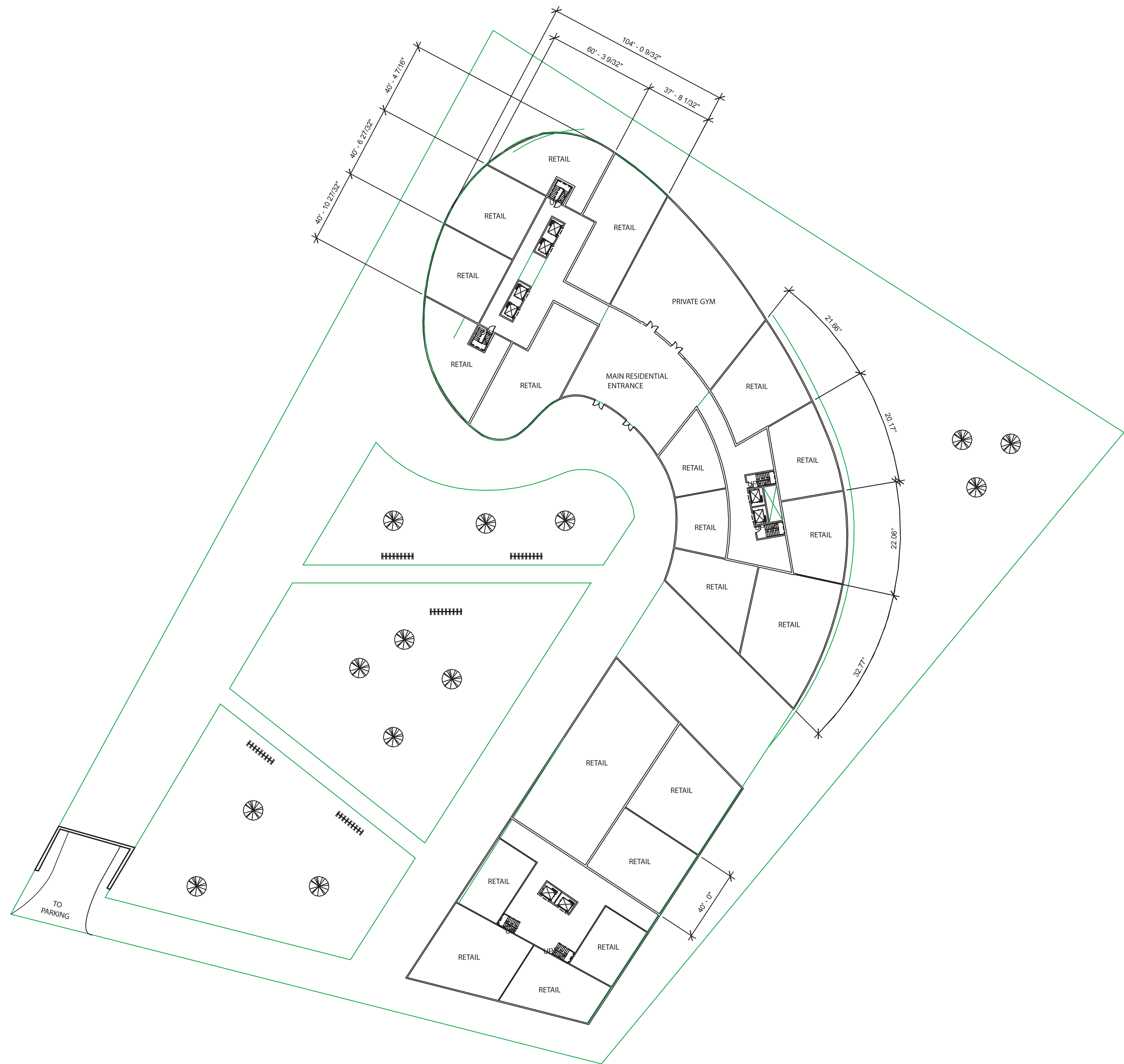


UNDERGROUND LIGHTING AND VENTILATION









① Level 1
1" = 30'

Ground lvl

