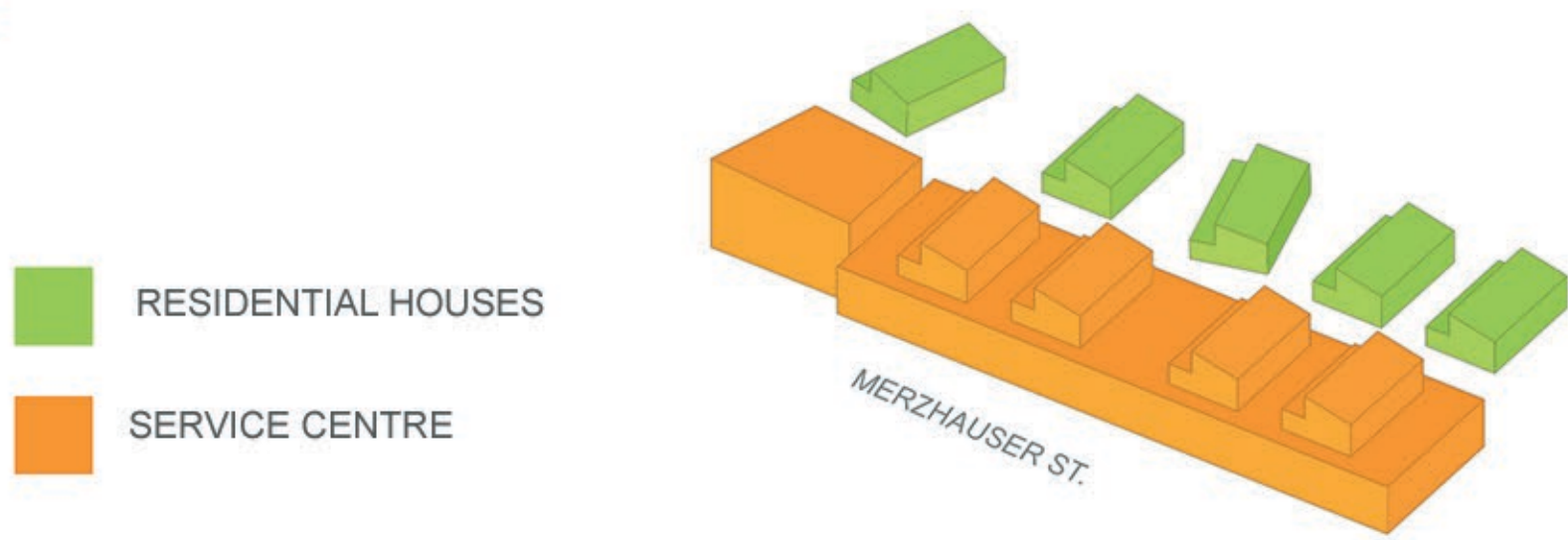




“FORM FOLLOWS FUNCTION”

- LOUIS SULLIVAN

CONFINING

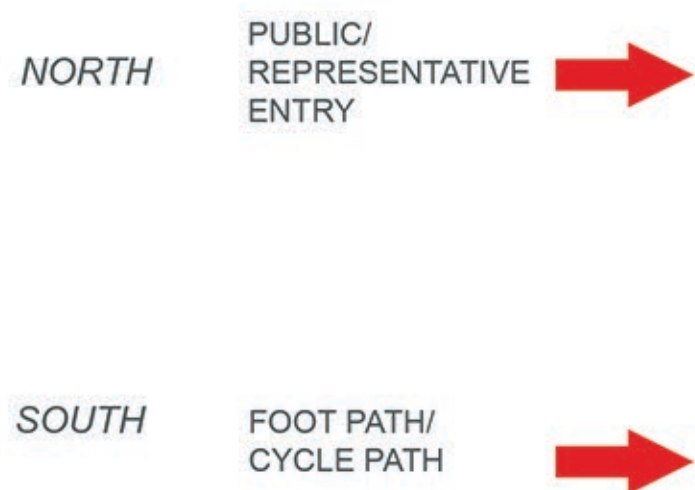


LIGHT

“CONTINUOUS GLASS FACADE – FLOATING TRANSPARENCY AND TRANSLUCENT AIRINESS”



OPENING



COLOR

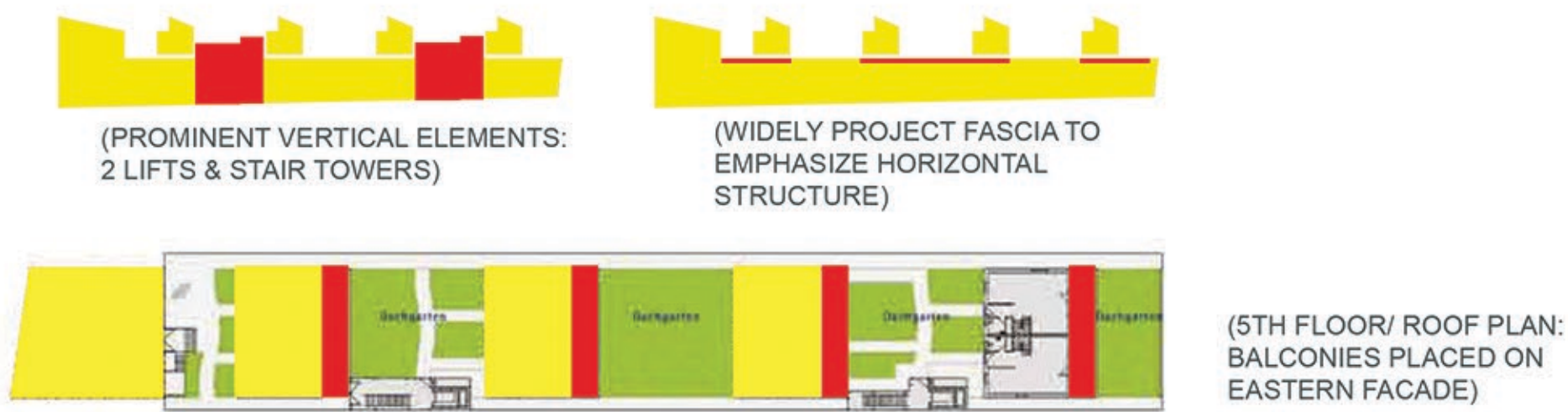
THE COLOR CONCEPT BY BERLIN ARTIST ERICH WIESNER “THE DRYER” – AN INTEGRAL PART OF THE SCHEME FROM SCRATCH



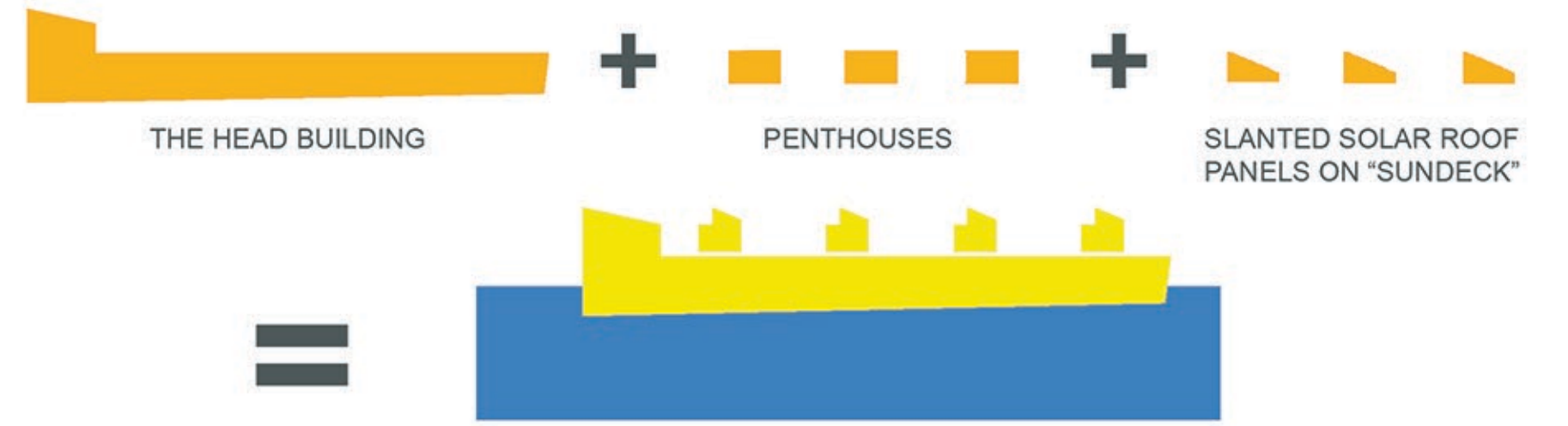
(MULTICOLORED COVERS OF VENTILATION UNITS)

STRUCTURING

– AESTHETIC IMPULSE FOLLOWS FUNCTION”



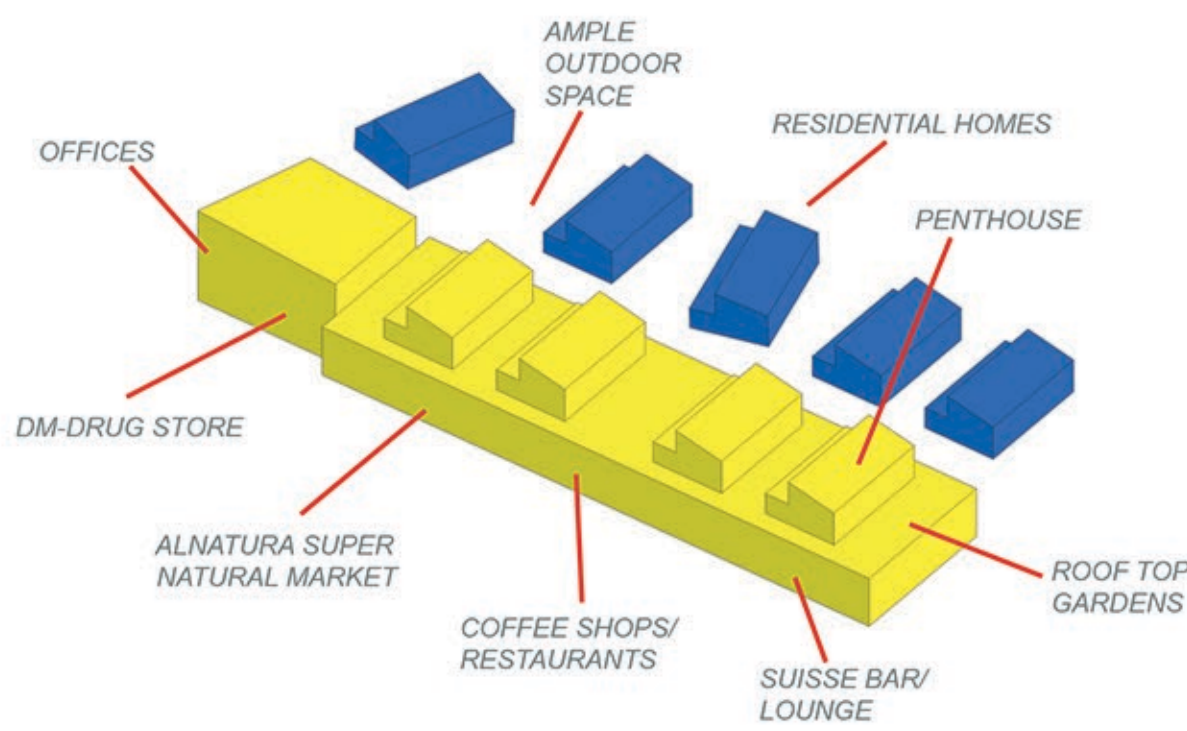
THE SHIP



STRATEGIES

SOCIAL

“THE RECIPROCAL LINKAGE OF COMPANIES IN THE SUN SHIP GUARANTEES SHORTER DISTANCES FOR COOPERATION, BETTER COMMUNICATION AND INSPIRATION”



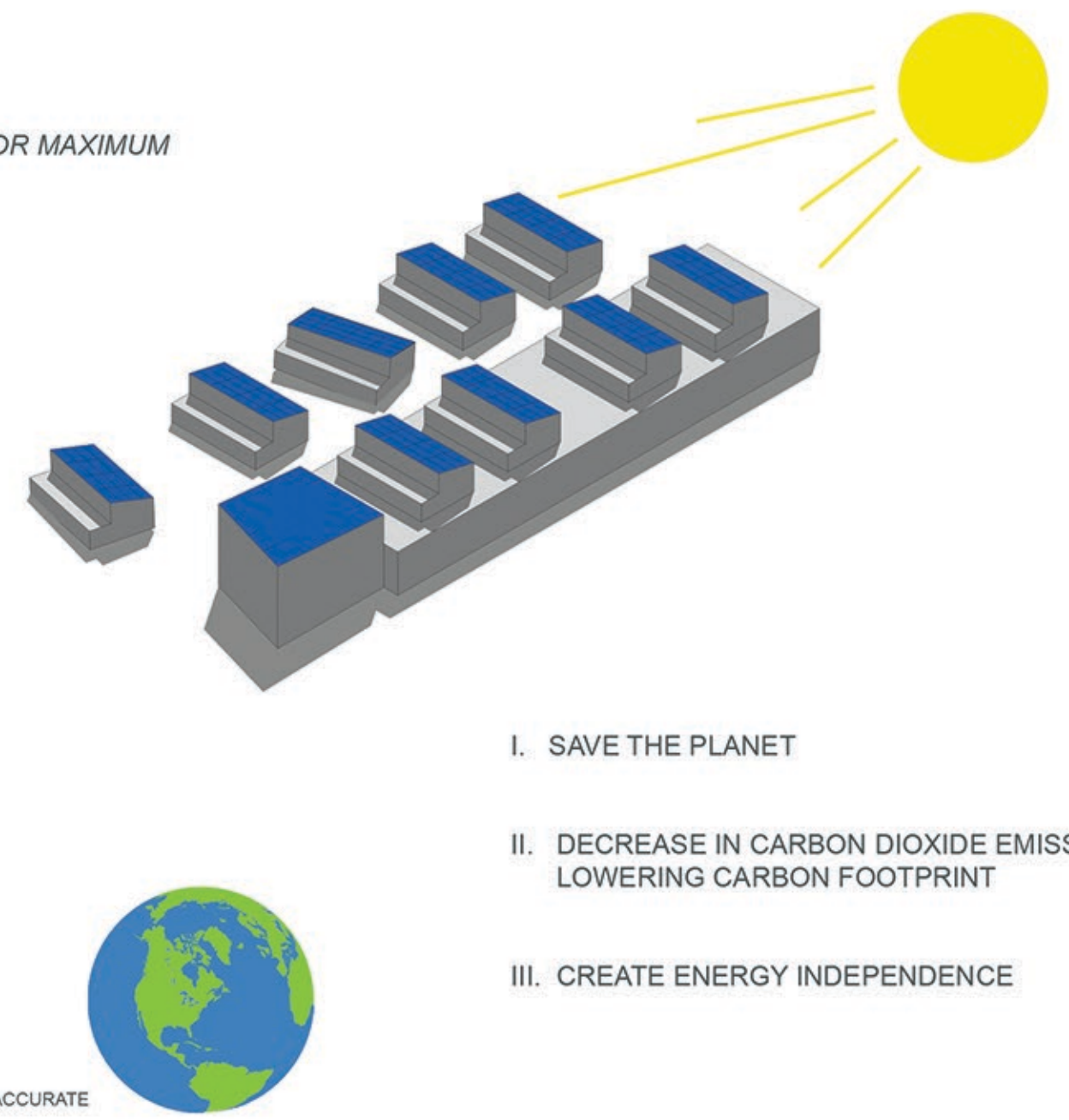
ECONOMIC

“THE SUN SHIP OFFERS AN ANIMATED ENVIRONMENT AND A FUNCTIONAL INFRASTRUCTURE FOR NOW OFFICE AND PRAXIS TENANTS. AND WITH THE 1ST SUN SHIP IT OFFERS AN INTERESTING INVESTMENT OPPORTUNITY”



ENVIRONMENTAL

SOLAR PANELS ORIENTED FOR MAXIMUM SOLAR GAIN



CONCEPTUAL

PROJECT | HUALIEN RESORT ARCHITECT | BIG



PROJECT | INTERLACE ARCHITECT | OMA



HUALIEN RESORT (1) vegetation stripes run east /west to block solar & thermal exposure from low/angle morning & evening sun. They also mitigate heat gain to increase comfort at balconies/teraces - minimizing cooling energy loads, (2) Mountainous building mass creates comfortable micro-climates at the pedestrian level.

INTERLACE (1) Expansive interconnected network of living and communal spaces integrated into environment. (2) Hexagonal patterns to form open/permeable courtyards. They also create micro-climate conditions that integrate low-impact passive energy strategies