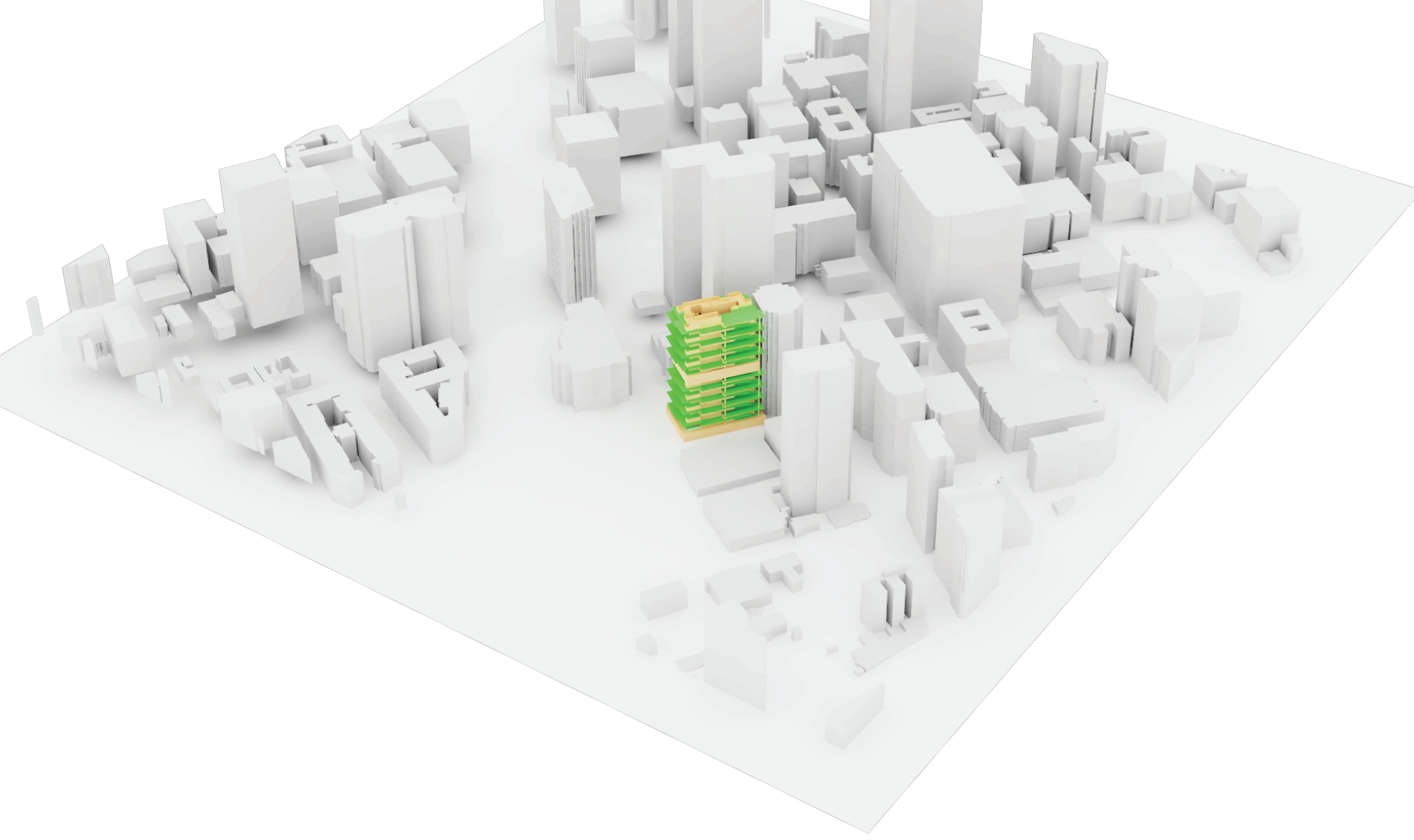


HANGING GARDENS CO-HOUSING

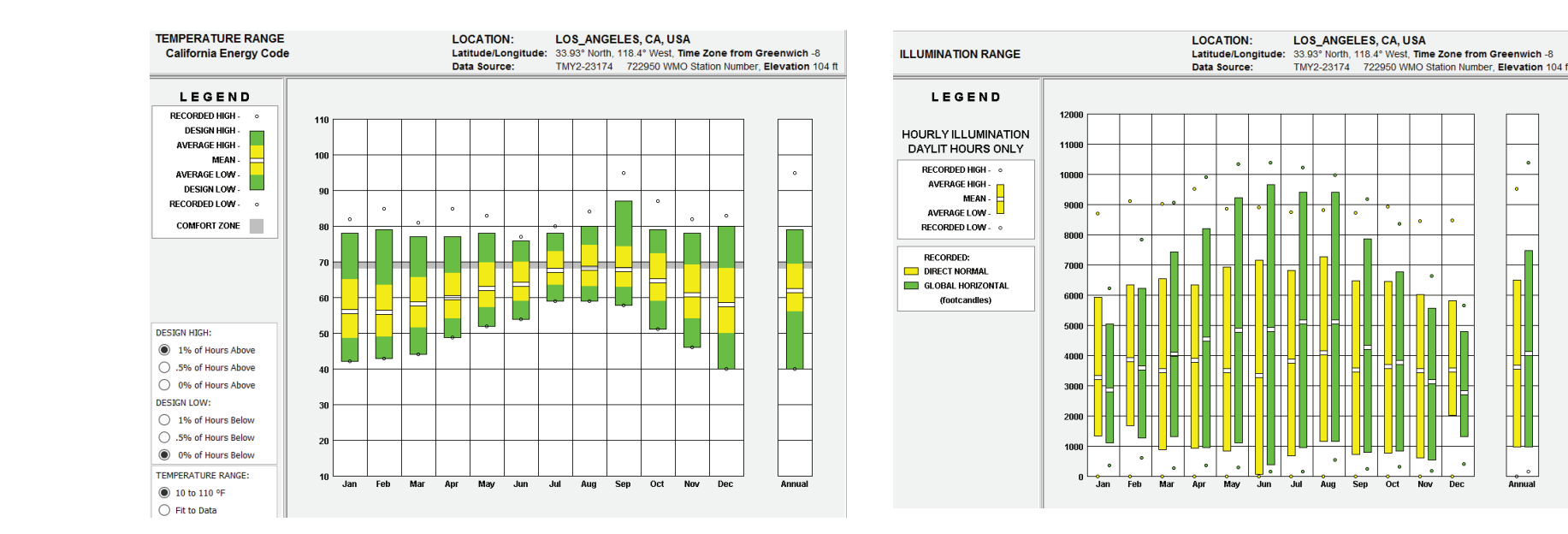
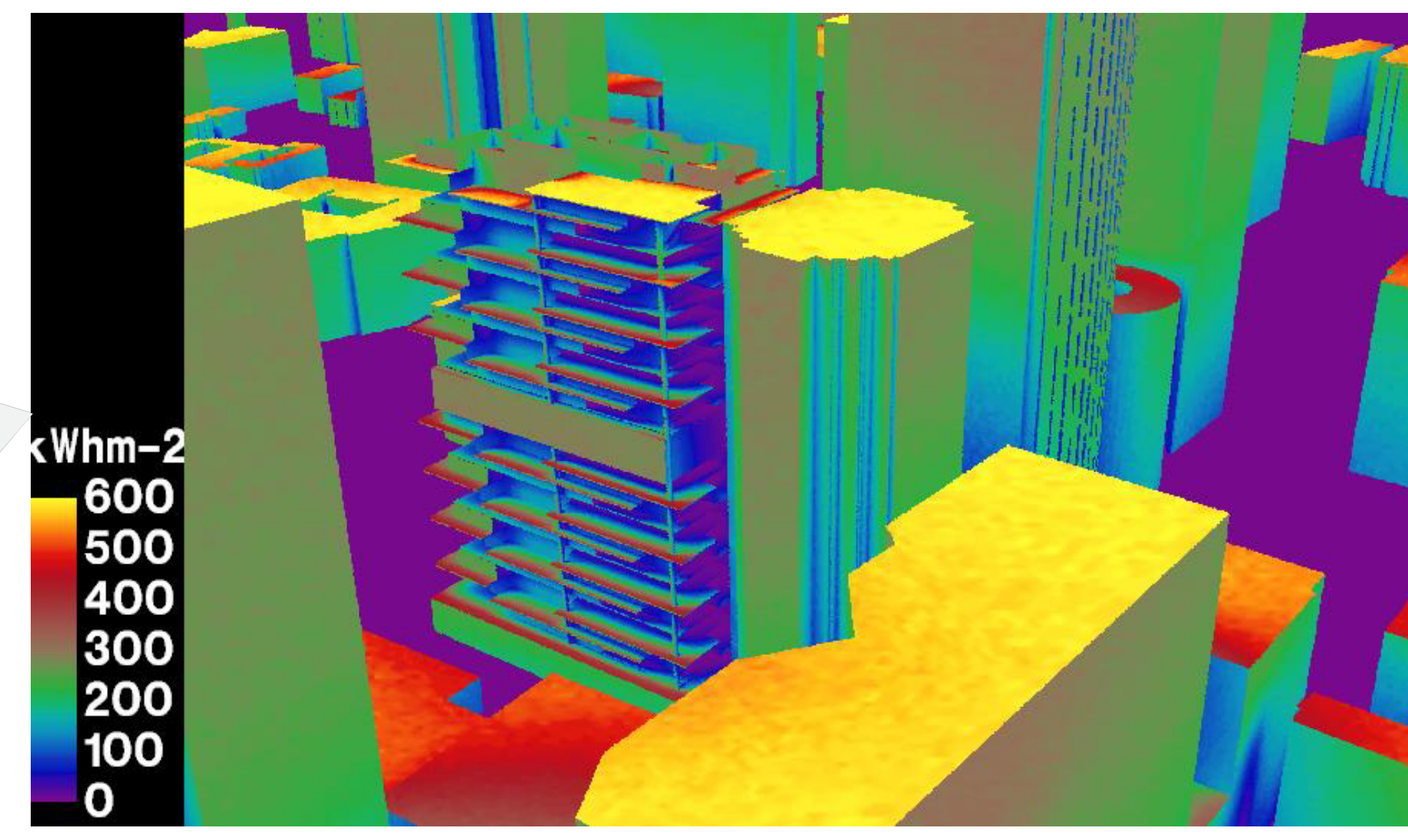


946 W 8th Street
Los Angeles, CA

FINANCIAL DISTRICT

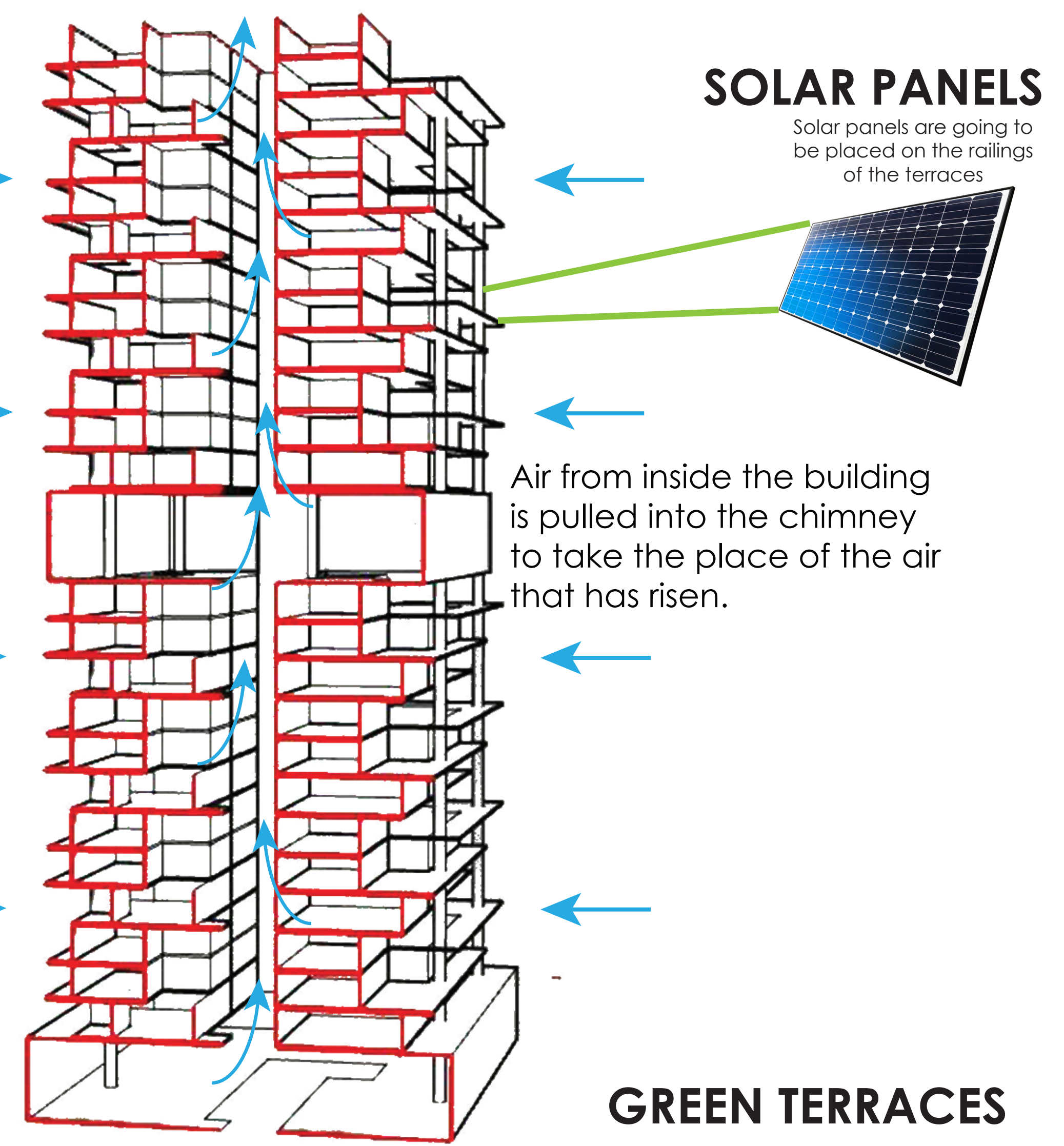
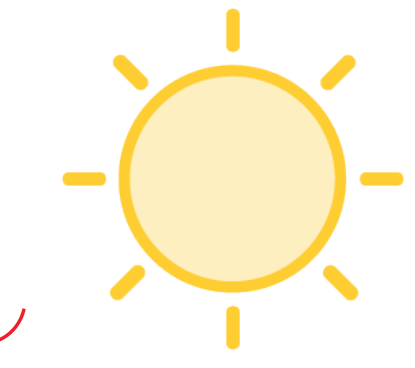
30 STORIES
400' TALL
90 UNITS

SOLAR RADIATION

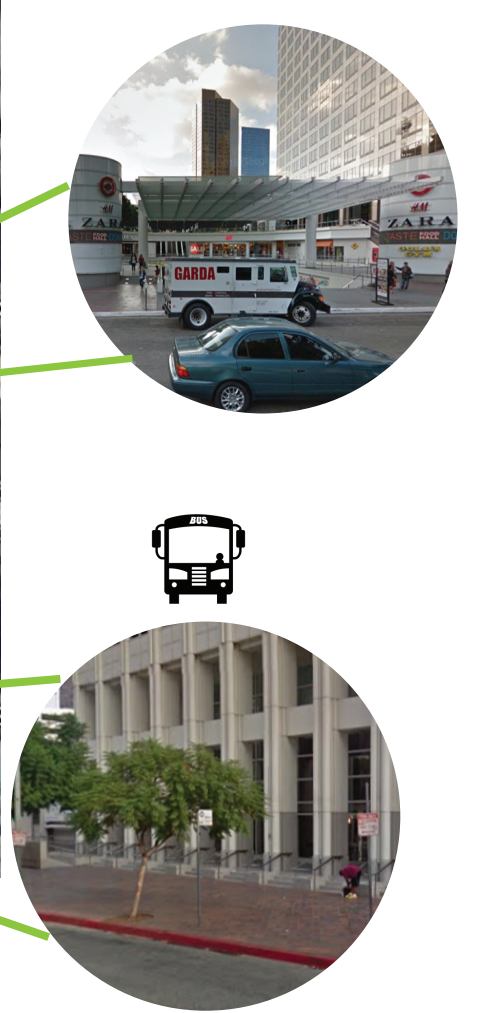
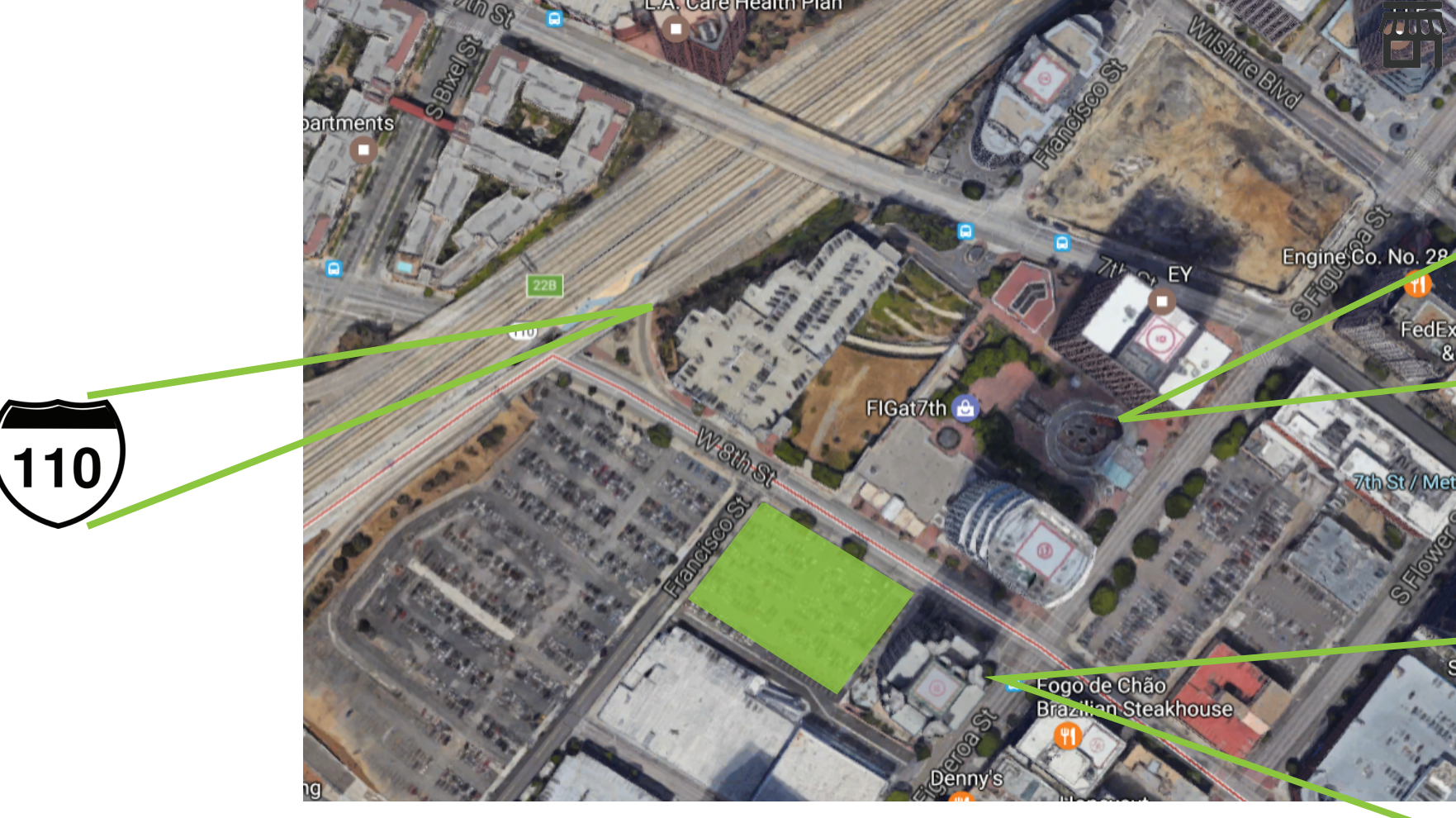


SOLAR CHIMNEY

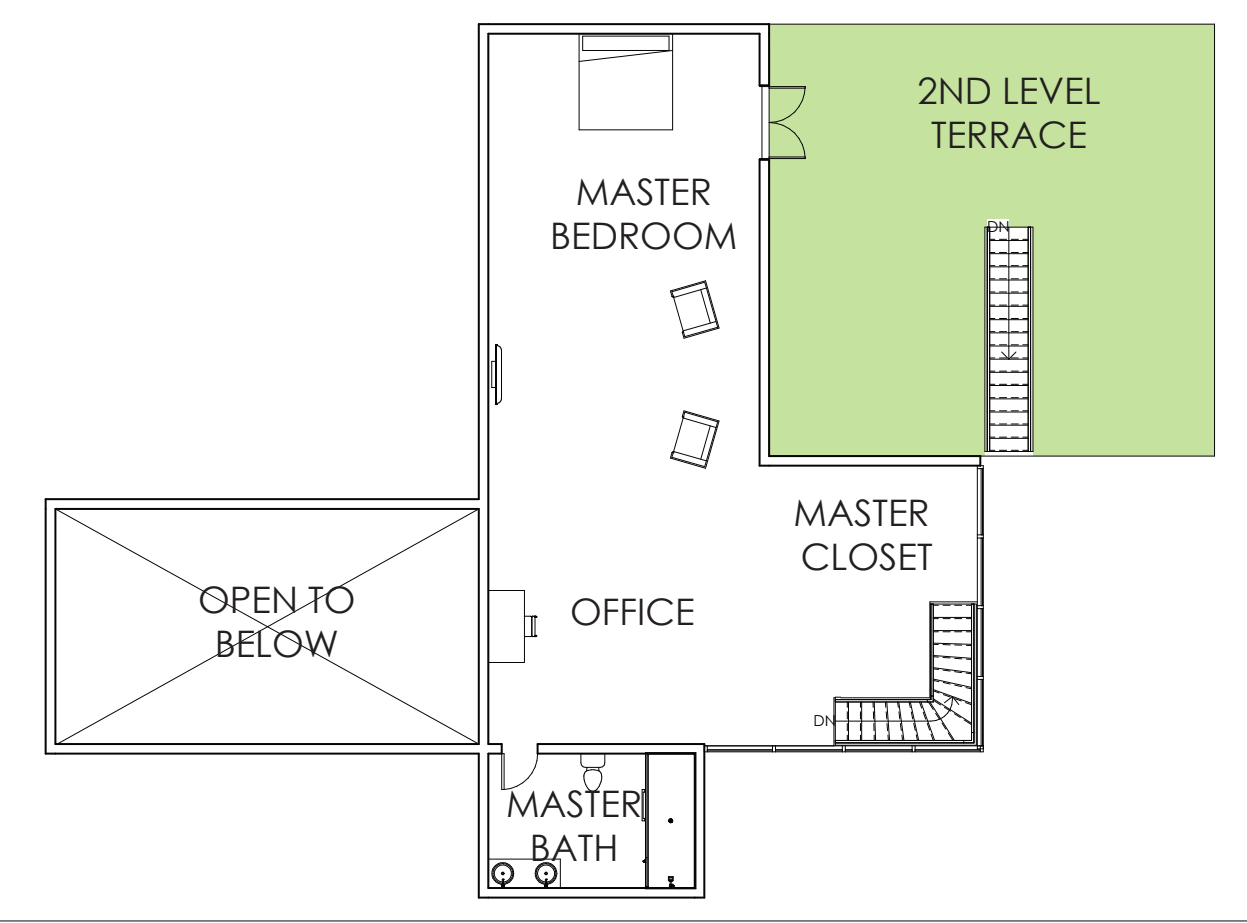
The sun heats the top of the solar chimney, warming the air and exhaust through openings.



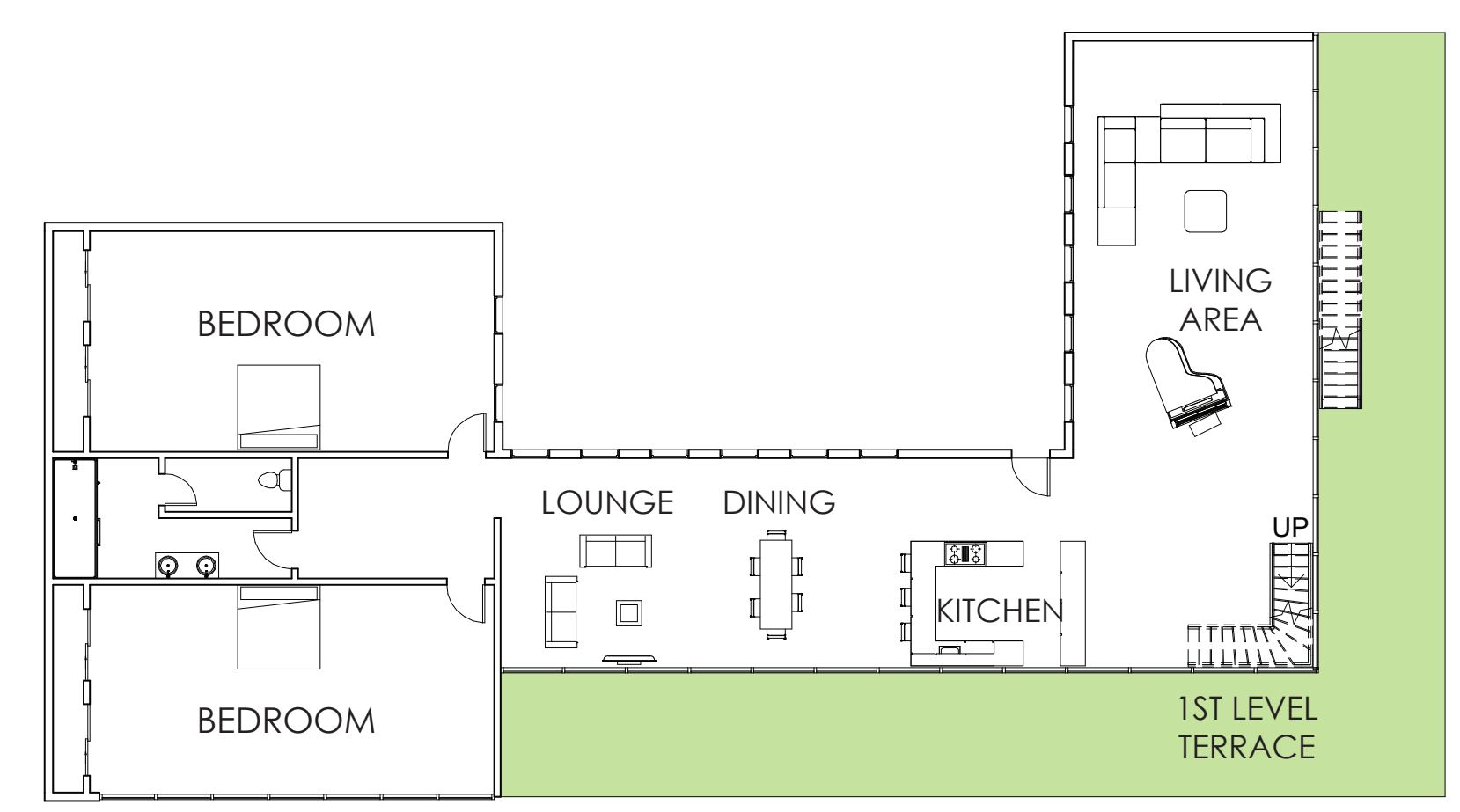
CONTEXT



UNIT PLANS

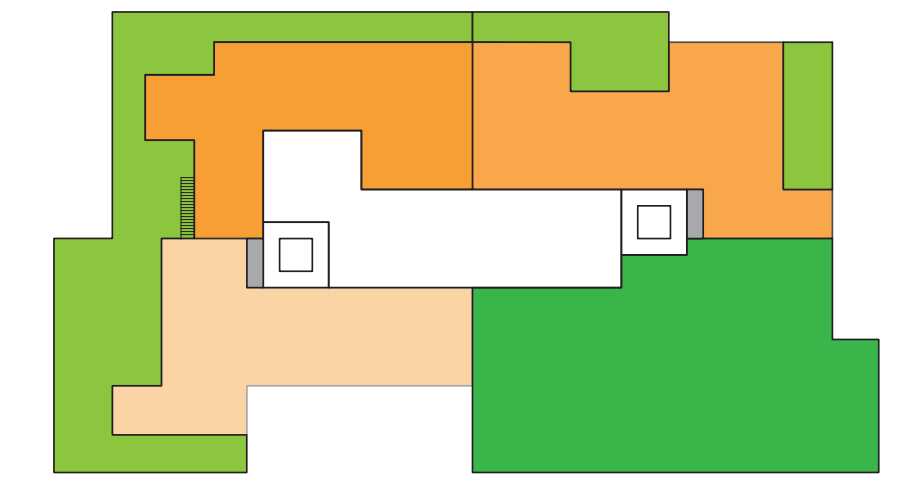


② Level 2 (UNIT A)
1/16" = 1'-0"

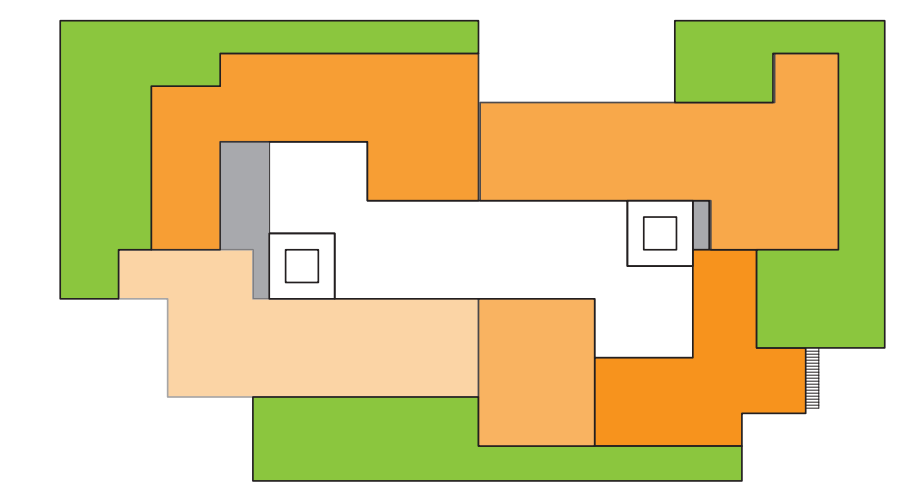


① Level 1 (UNIT A)
1/16" = 1'-0"

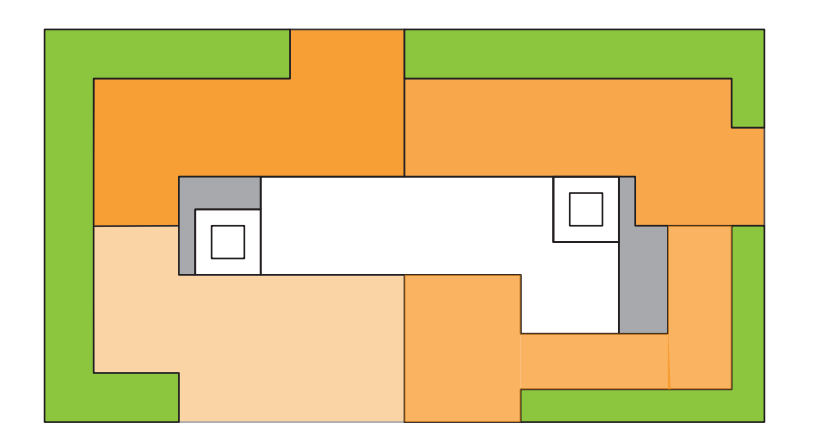
FLOOR PLANS



Level 3



Level 2



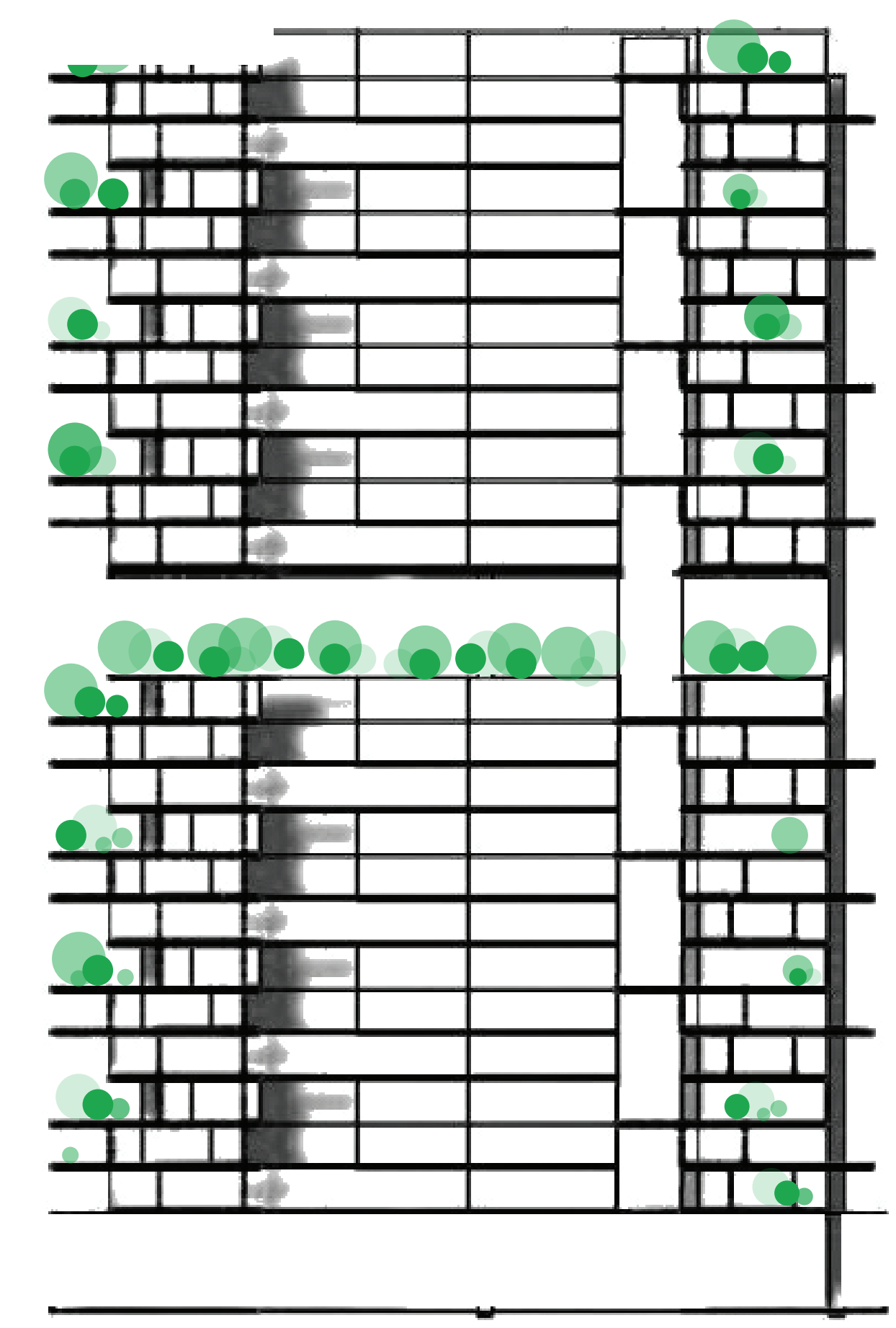
Level 1

Succulents store water in their leaves, stems or roots that help them survive periodic drought. While most are native to warmer parts of the world, not all tolerate summer heat. Succulents are useful as ground covers, erosion controllers, and as decorative additions to local landscapes. Those with sharp tipped leaves need to be carefully situated to avoid foot traffic.



- LEGEND**
- Units
 - Corridor
 - Terrace
 - Community Space

GREEN TERRACES



MODULAR FLOOR PLATES

