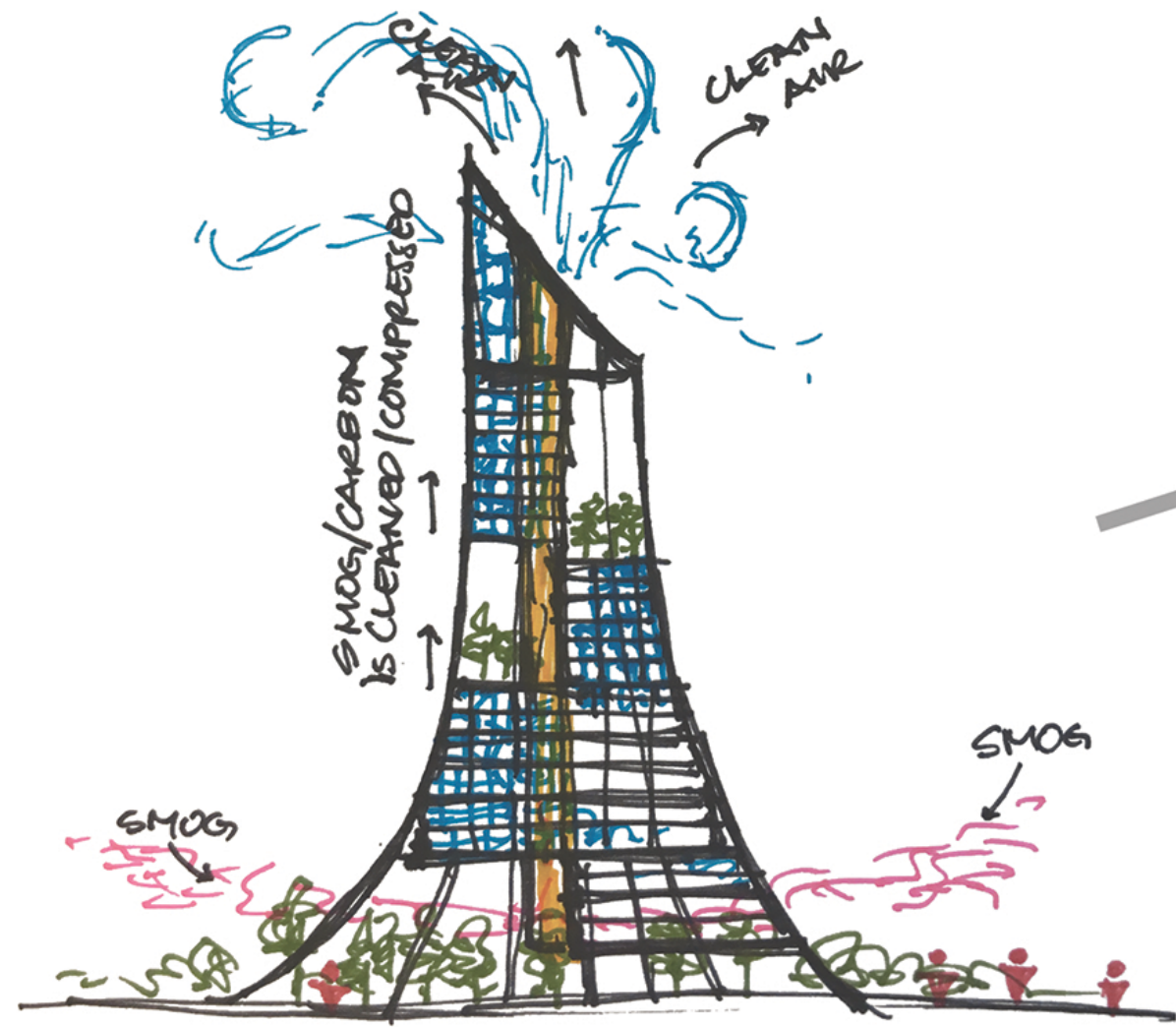


AIR PURIFIER

SITE ANALYSIS | DESIGN CONCEPT

CONCEPT



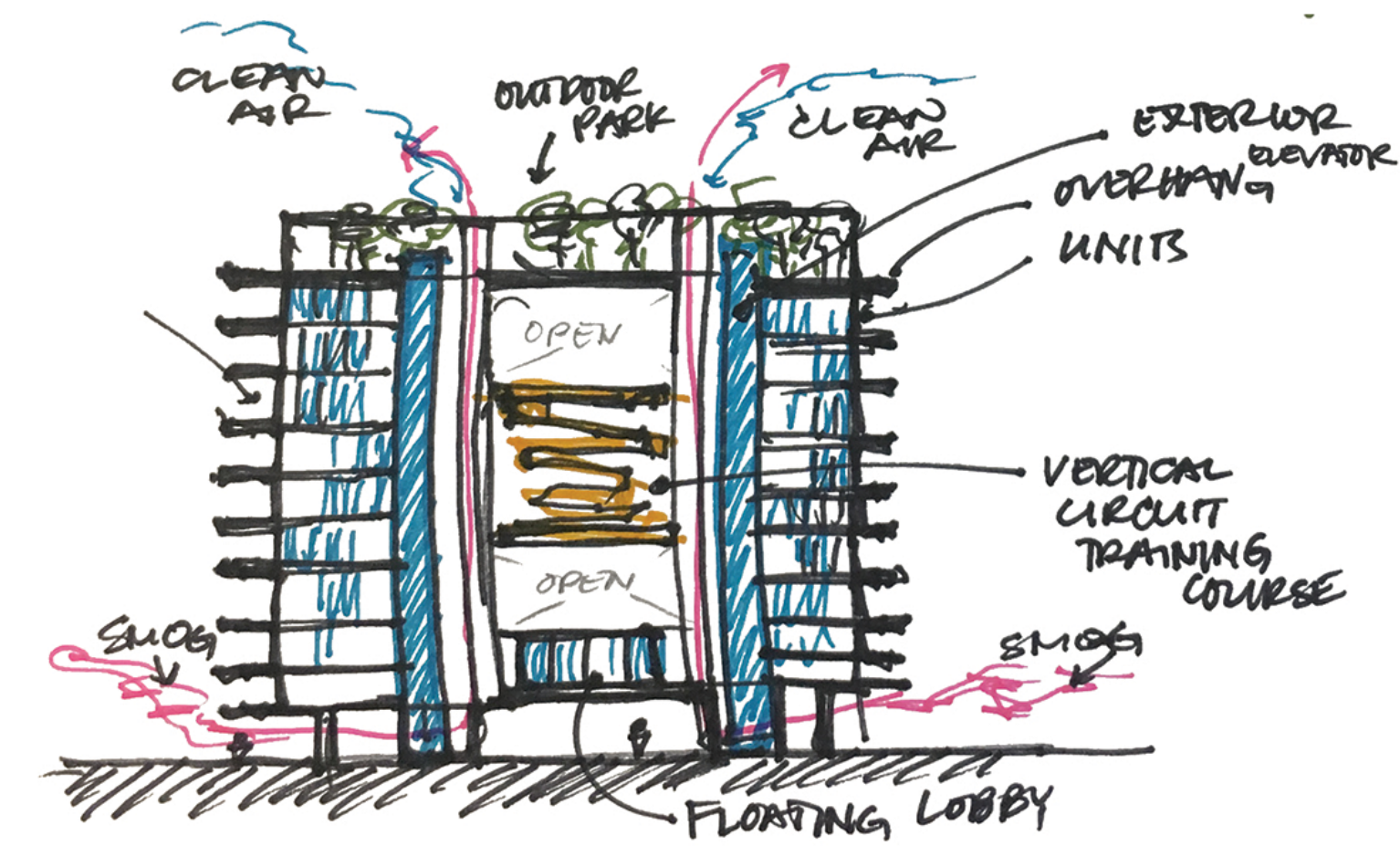
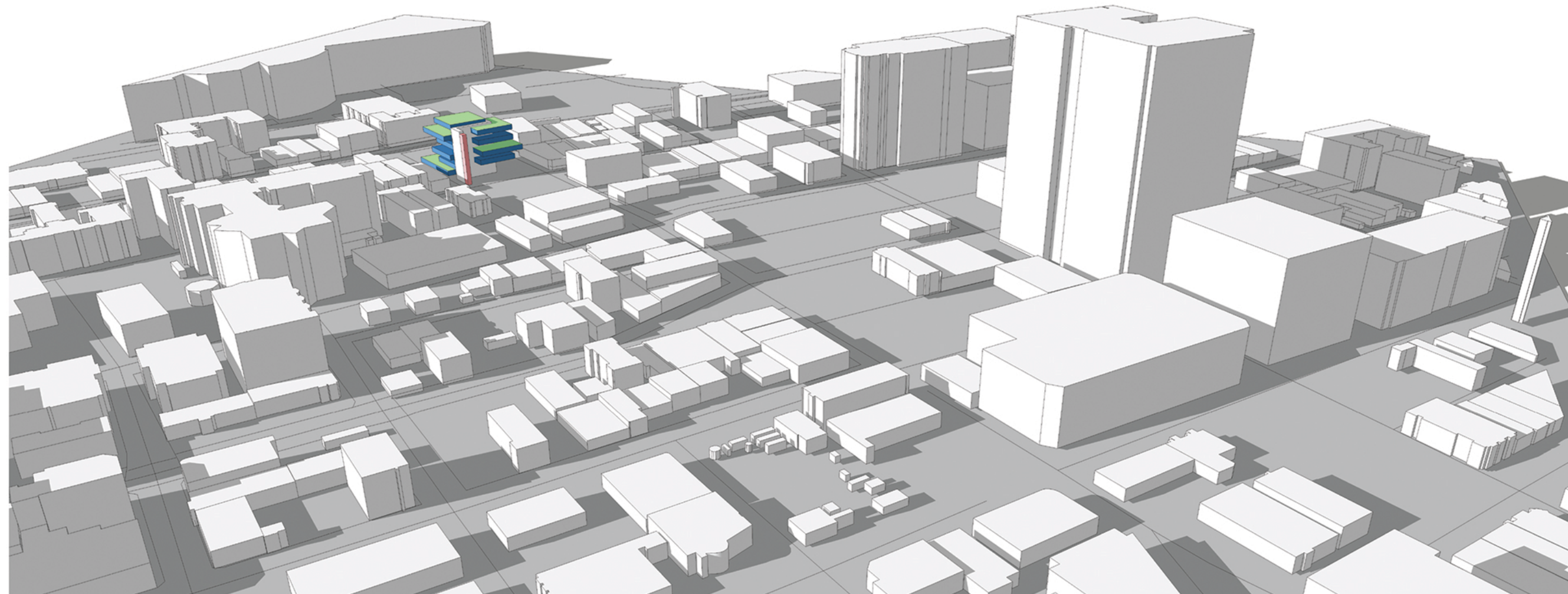
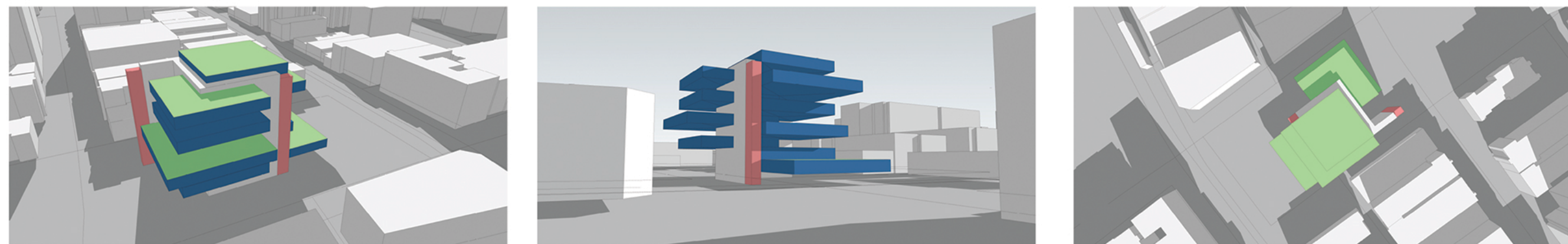
CONCEPT DRAWING 01

- FLOATING PLANES
 - PV CLADDING/ SKIN
 - OFFSETTING PLANES
 - ERFORATIONS
 - TRANSPARENCY
 - CANOPIES
- OPTION A

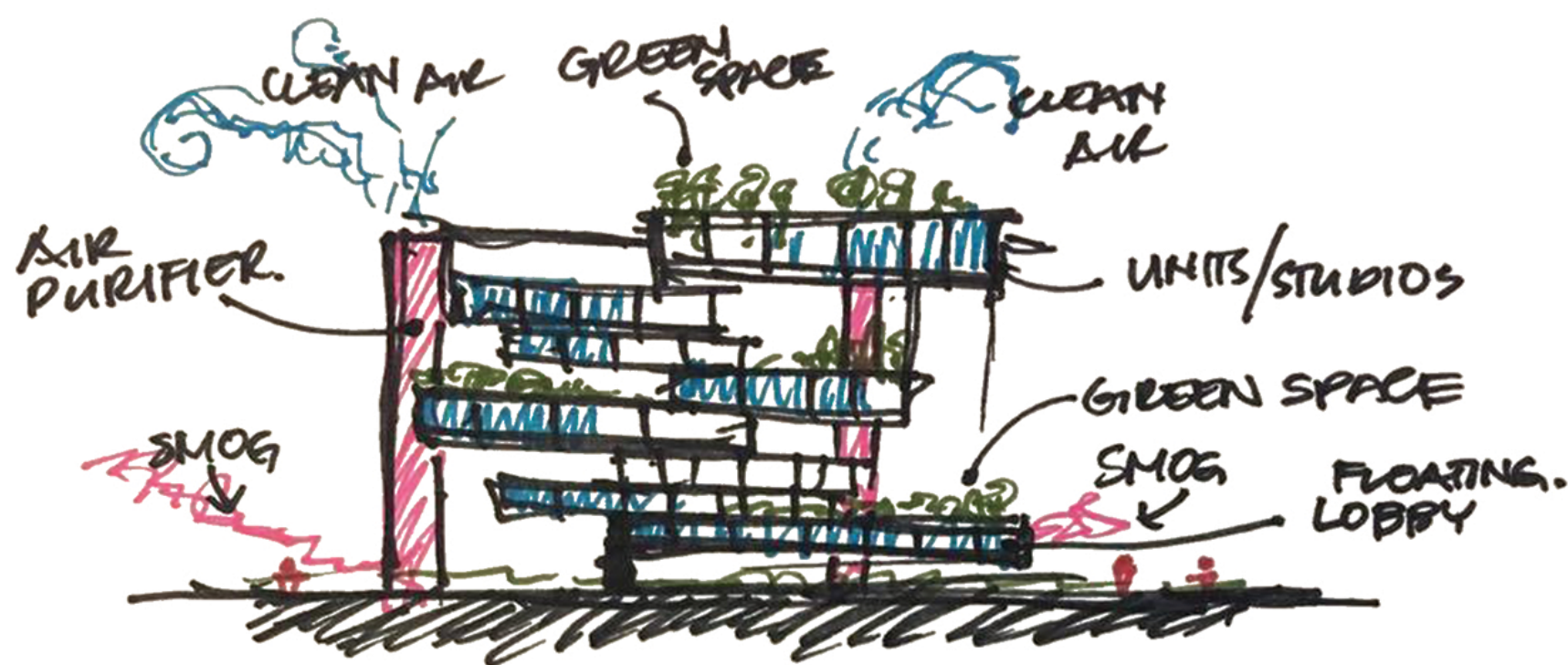
LOT SIZE: 48,750 SF

POTENTIAL PROGRAM FOR BUILDING

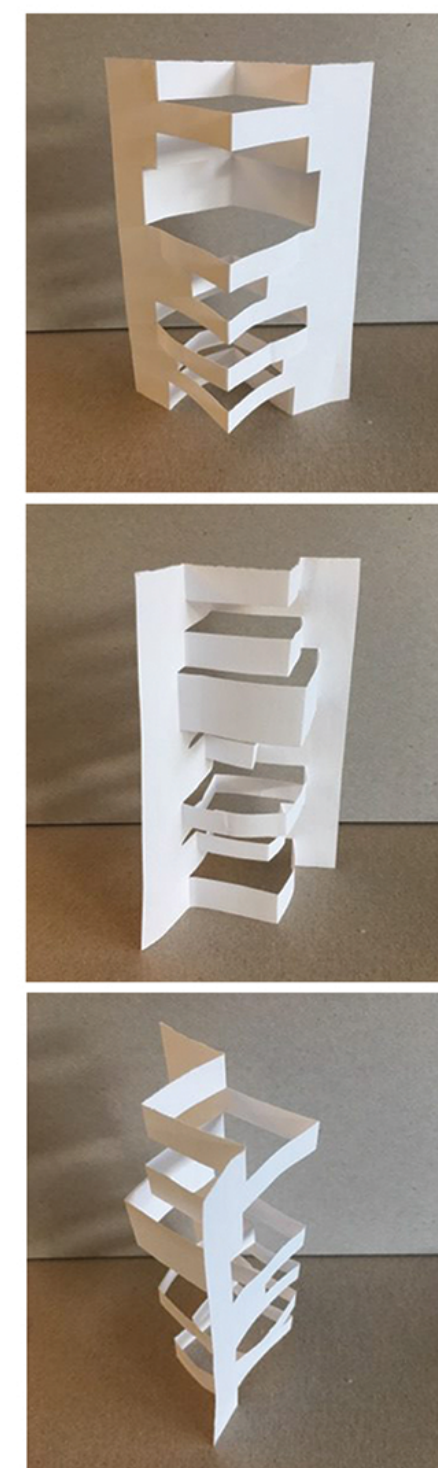
- COMMUNAL GREEN SPACE
- AIR PURIFYING SYSTEM
- STUDIO UNIT LOCATIONS
- VERTICAL/HORIZONTAL CIRCULATION



CONCEPT DRAWING 02



CONCEPT DRAWING 02



CONCEPT MODEL

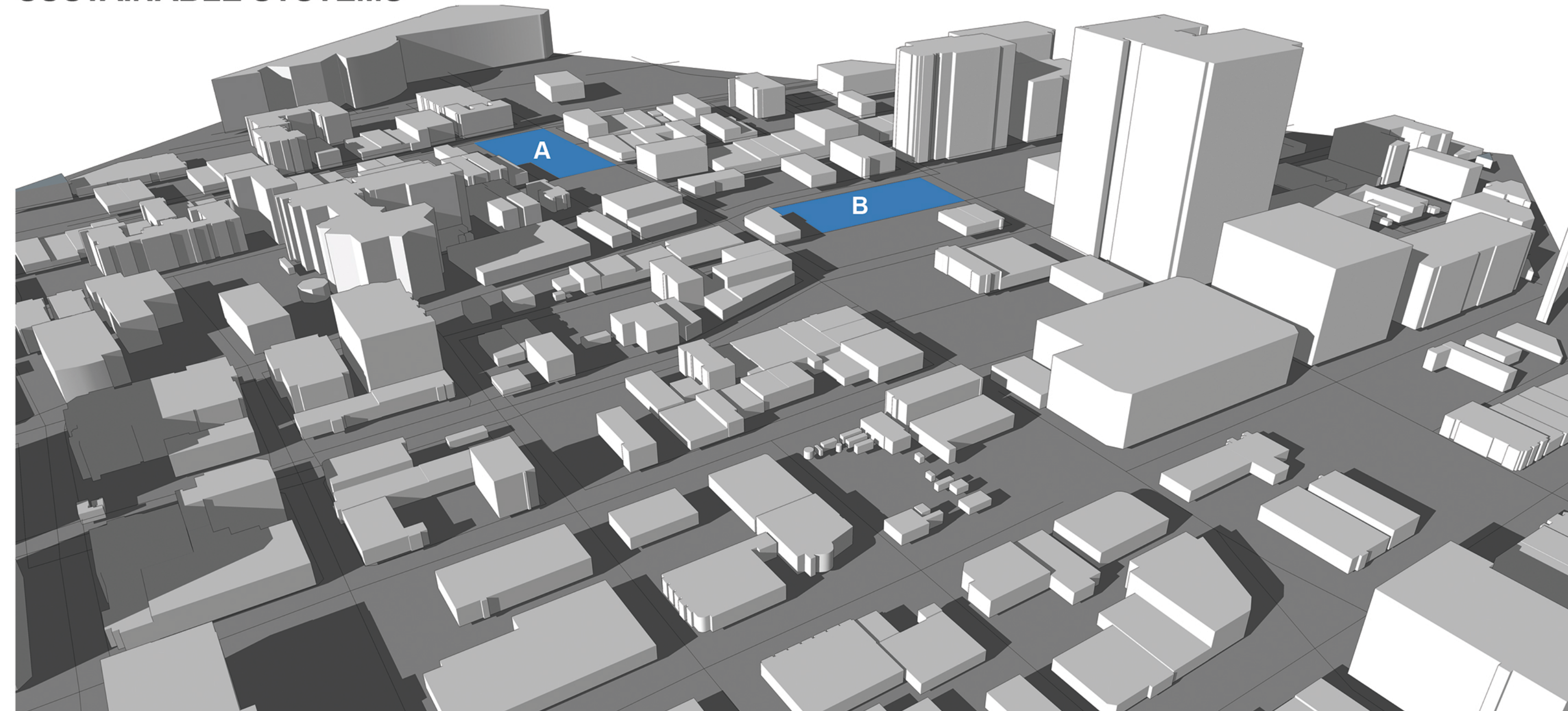
SITE OPTIONS



LOCATION: 520 W PICO BLVD., LOS ANGELES

- POTENTIAL SITE
- SURROUNDING BUILDINGS
- OPTIONS A + B
- PUBLIC TRANSIT NEAR SOCIAL HUB
- NEARBY RESIDENTIAL

SUSTAINABLE SYSTEMS



1. AIR FILTRATION SYSTEM
2. SOLAR PANELS
3. INTERIOR/ EXTERIOR GREEN SPACE
4. WOOD STRUCTURE (CARBON ABSORPTION)
5. LOCAL MATERIALS
6. RECYCLABLE/ RENEWABLE MATERIALS
7. SOLAR CHIMNEY
8. TITANIUM DIOXIDE SKIN